



Comforts of a New Home with Nature at Your Back Door



WINDSORAUGHTRY.COM

Table of Contents

<i>Builders Story</i>	3
<i>Community Map</i>	4
<i>Community Plat</i>	5
<i>Community Information</i>	6
<i>Standard Features</i>	7
<i>The Wellford</i>	8
<i>The Barrington</i>	9
<i>The Hamilton</i>	10
<i>The Andover</i>	11
<i>The Canterbury</i>	12
<i>The Huntington</i>	13
<i>The Oxford</i>	14



Our builder's story began in 1987 with a vision by four gentlemen in the employ of a large tract builder. Their mission was to become a small local builder who would provide a product with the emphasis on quality and value rather than quantity.

In that light, Windsor Properties was established. In 1988, they merged with Aughtry Company in order to diversify their services with the addition of commercial development, brokerage and management. Since that time, Windsor/Aughtry Company, with more than 70 years of combined experience among its three principals, has remained true to that mission.

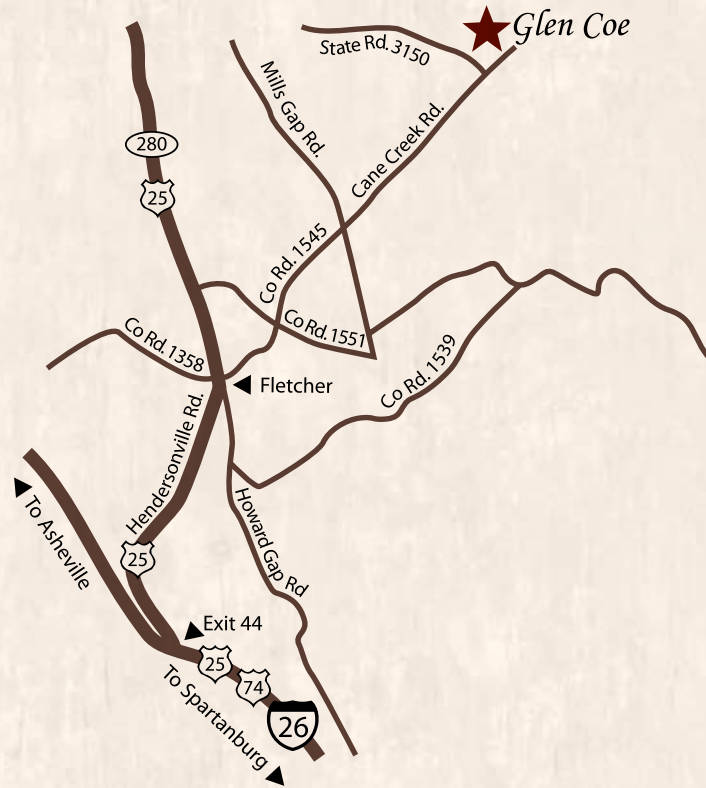
At Windsor/Aughtry, our mission statement reflects our philosophy... "The customer comes first." When visiting our sales models, you'll find our sales agents to be warm and friendly with the objective to help you feel at ease

in the home buying process. We offer a wide variety of floor plans with extensive options to tailor your home to meet your needs. Although we do offer many options, you'll find that what other builders consider "extras," we include as standard features.

Our customer service is second to none. Being residents of nearby Greenville, SC, our reputation hinges on the satisfaction of those who buy our homes. We aren't here today and gone tomorrow as many others are. You don't have to go to the top in some far-away city to get results. The "top" is only minutes away and accessible to you – our neighbor.

Windsor/Aughtry has been an established builder in the area since 1988. We were here yesterday, we're here today, and most importantly, we'll be here tomorrow... when it counts the most.



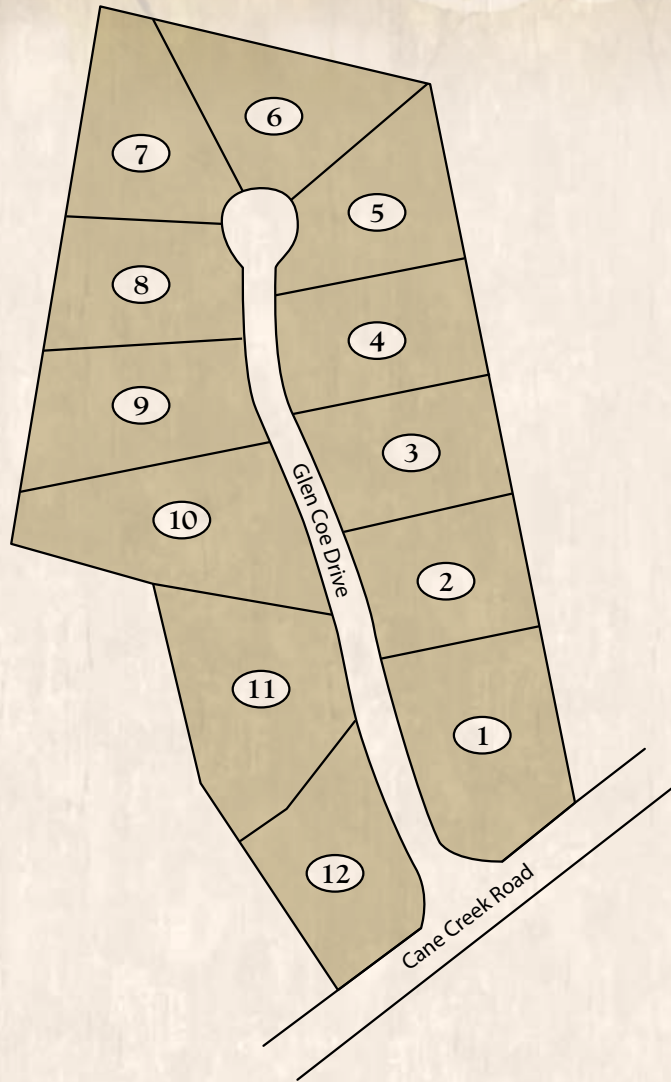


Directions

From Hendersonville: Take I-26 West to Exit 44 toward Fletcher. Turn right (north) onto Hwy 25. Go approximately 2.6 miles to the stop light where Hwy 25 intersects with Cane Creek Rd. (There will be a CVS.) Turn right onto Cane Creek Rd. Go approximately 5 miles. Turn left into Glen Coe.

From Asheville: Take Hwy 74 East into Fairview. In 7.5 miles, turn right onto Cane Creek Rd. Glen Coe will be on your right in 3.5 miles. Or, take Hwy 25-A (Sweeten Ck Rd) to Left on Mills Gap Rd. Then, Left onto Cane Creek Rd and left into Glen Coe.





Schools

Fairview Elementary School 828/628-2732
1355 Charlotte Highway, Fairview

Cane Creek Middle School 828/628-0824
570 Lower Brush Creek Road, Fletcher

AC Reynolds High School 828/298-2500
1 Rocket Drive, Asheville

Public Service

Post Office 828/684-6376
3616 Hendersonville Road, Fletcher

Division of Motor Vehicles
Driver's License 828/251-6065
License Tag Agency 828/252-8526

Voter Registration 866/522-4723

Buncombe County Tax Collector 828/250-4910

Asheville Area Chamber of Commerce 828/258-6101
36 Montford Avenue, Asheville

Buncombe County Library 828/250-6484
Fairview Branch, 1 Taylor Road

Cane Creek Public Pool 828/628-4494

Transportation

Asheville Regional Airport 828/684-2226
61 Terminal Drive, Fletcher

Hospitals

Park Ridge Hospital 828/684-8501
100 Hospital Drive, Hendersonville

Mission Memorial Hospital 828/213-1111
509 Biltmore Avenue, Asheville

Utility Companies

Progress Energy 800/452-2777

AT&T 888/757-6500

Public Service Co. of NC Energy (Gas Company) 877/776-2427

City of Asheville Water 828/251-1122

Secure One 800/368-0111

Direct TV 866/535-9593

Dish Network 800/201-1363

Waste Pro (private garbage service) 828/684-7790



Features That Ensure Your Satisfaction

- Deeded restrictions and covenants
- Pre-start orientation
- Pre-drywall orientation
- Pre-occupancy orientation of your home
- Builder's one-year warranty
- Homeowner Maintenance and Warranty book

Standard Interior Features

- Hardwood flooring in foyer
- Direct-vent fireplace with 36" gas logs/traditional mantle/slate surround
- 3 pre-wires for cable television
- 3 pre-wires for telephone
- Pre-wiring for ceiling fan in all bedrooms and great room
- Raised six-panel interior doors
- Colonial wood trim casings around all interior doors and windows, 5 inch base
- Cathedral/vaulted ceilings (per plan)
- Kick-plates/numbers on entrance door
- Choice of brand-name, stain resistant carpets
- Lofts (per plan)
- Soft Shell walls with Extra White trim
- Smooth ceilings
- Washer/Dryer hook-up
- Ventilated closet shelving
- Smoke detectors
- Disappearing staircase to attic
- Crown molding in all areas downstairs (except closets, powder room)
- Chair rail with picture frame molding below in dining room

Standard Kitchen & Bath Features

- Appliances including:
 - Self-cleaning smooth-top range
 - Over the range microwave
 - Multi-cycle dishwasher
 - 1/2 horsepower disposal
- Ice maker hook-up
- Double 8" deep stainless steel kitchen sink with spray arm

- Laminated Formica kitchen countertops
- Pantries (per plan)
- Garden tubs (per plan) in master bath
- Low maintenance fiberglass tub in hall bath
- Cultured marble vanity tops in baths
- Pedestal sink in powder room
- 35" high vanity base in master bath
- Full vanity mirror in baths
- Exhaust fans in bathrooms
- Elongated toilets
- Selection of several vinyls for kitchen & baths

Energy Saving Features

- Gas Heat
- Central air conditioning
- R-38 insulation in ceilings
- R-13 insulation in walls
- R-19 insulation in crawl space
- Double paned windows
- Insulated fiberglass front door
- Insulated steel door in rear of house and garage

Exterior Features

- Masonry foundation on crawl space/basement
- Engineered wall and roof construction
- 30-year architectural roof shingles
- Termite treatment
- Maintenance-free vinyl windows (with screens) that tilt for easy cleaning
- Cement board siding, vinyl soffit w/ aluminum fascia
- Aluminum gutters with downspouts
- Choice of exterior colors
- Garage interior walls painted/trimmed
- Raised panel single garage door with electric opener
- Concrete driveways, walkways and 10' x 12' deck
- Landscaping includes 15 pallets of sod, 4 trees, 35 evergreen shrubs; seed and straw in remaining usable space
- Downspouts piped minimum of 5' away from house
- Underground utilities
- Decorative mailbox
- Exterior faucets and weatherproof outlets
- Septic system provided by builder



Wellford



Wellford

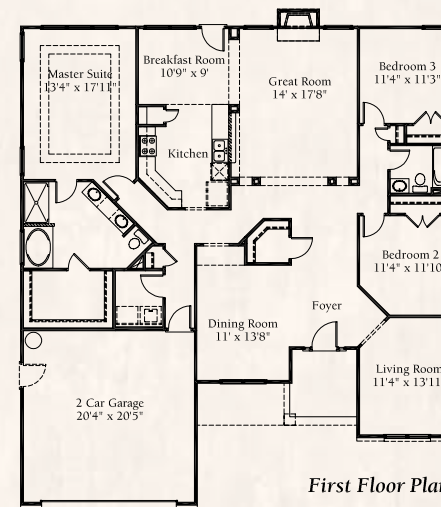
APPROXIMATELY 2130 SF



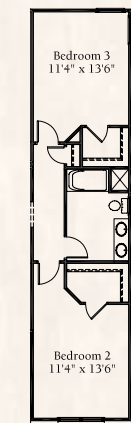
Elevation 5



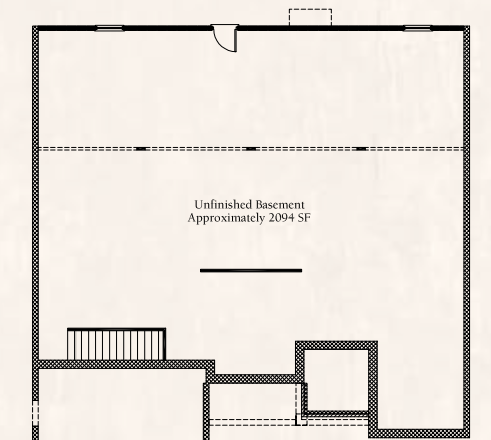
Elevation 6



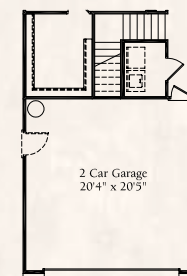
First Floor Plan



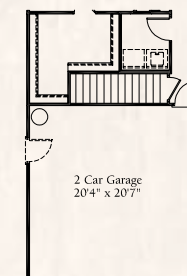
Optional Expanded Bedrooms 2 & 3



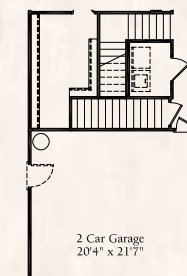
Unfinished Basement (not available on all lots)



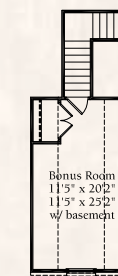
First Floor Plan with Optional Bonus Room



First Floor Plan with Basement



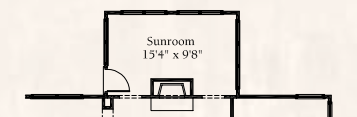
First Floor Plan with Basement and Opt. Bonus Room



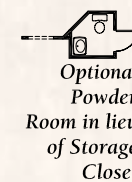
Optional Bonus Room



Optional Sunroom with Fireplace in Sunroom



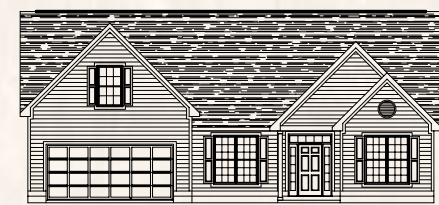
Optional Sunroom with Fireplace in Great Room



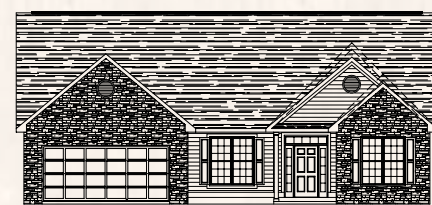
Optional Powder Room in lieu of Storage Closet



Optional Butler's Pantry



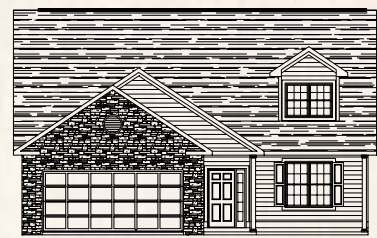
Elevation 1 with Opt. Bonus Room



Elevation 4

Room Sizes and square footage are approximate. Because we are constantly improving our homes, we reserve the right to revise, change and/or substitute features, dimensions, architectural details and designs without notice. Any illustrations are for discussion purposes only and are not part of the legal contract. Pricing is subject to change without notice.

Barrington



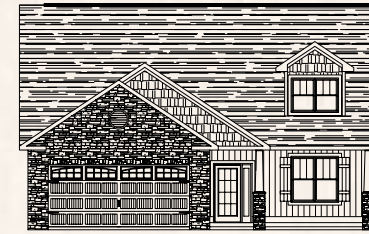
Elevation 4



Elevation 5

Barrington

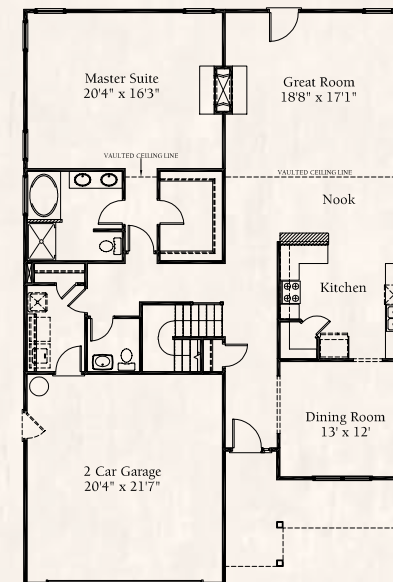
APPROXIMATELY 2518 SF



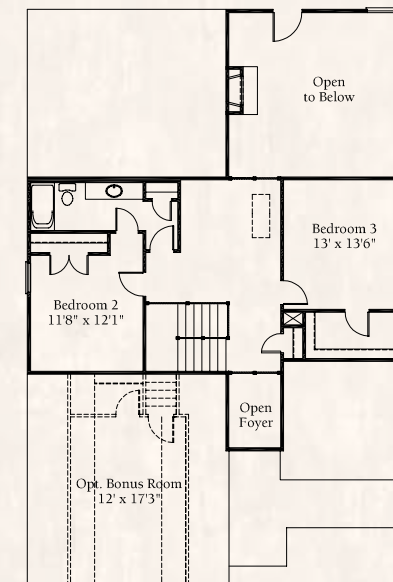
Elevation 6



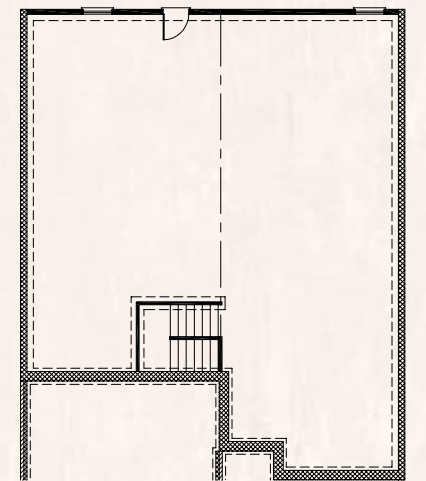
Elevation 6 w/ Optional Bonus Room



First Floor Plan

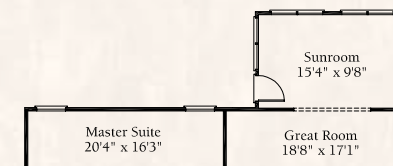


Second Floor Plan



Optional Basement
(Lot dependent)*

*Beam & wall layout is subject to builder design.

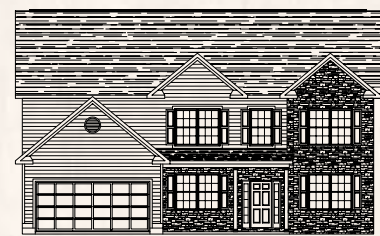


Optional Sunroom



Room Sizes and square footage are approximate. Because we are constantly improving our homes, we reserve the right to revise, change and/or substitute features, dimensions, architectural details and designs without notice. Any illustrations are for discussion purposes only and are not part of the legal contract. Pricing is subject to change without notice.

Hamilton



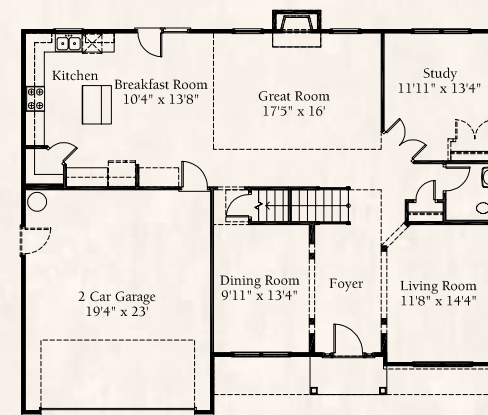
Elevation 4



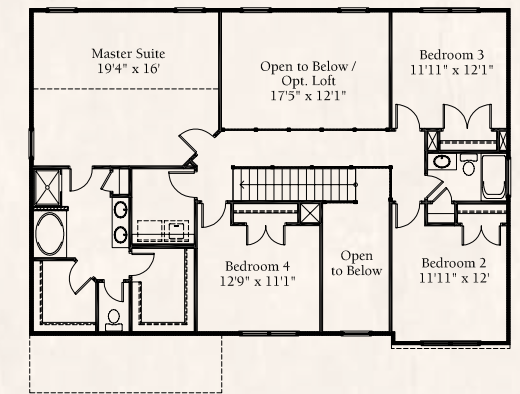
Elevation 5

Hamilton

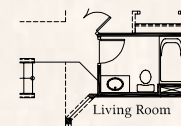
APPROXIMATELY 2712 SF



First Floor Plan



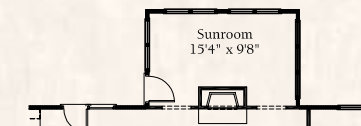
Second Floor Plan



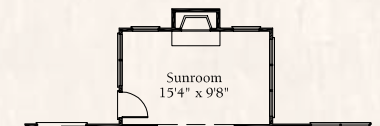
Optional Full Bathroom in lieu of Powder Room



Optional Bonus Room in lieu of Loft



Optional Sunroom with Fireplace in Great Room



Optional Sunroom with Fireplace in Sunroom



Room Sizes and square footage are approximate. Because we are constantly improving our homes, we reserve the right to revise, change and/or substitute features, dimensions, architectural details and designs without notice. Any illustrations are for discussion purposes only and are not part of the legal contract. Pricing is subject to change without notice.

Andover



Elevation 1



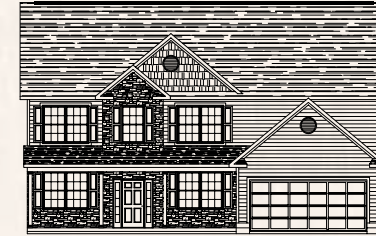
Elevation 2

Andover

APPROXIMATELY 2973 SF



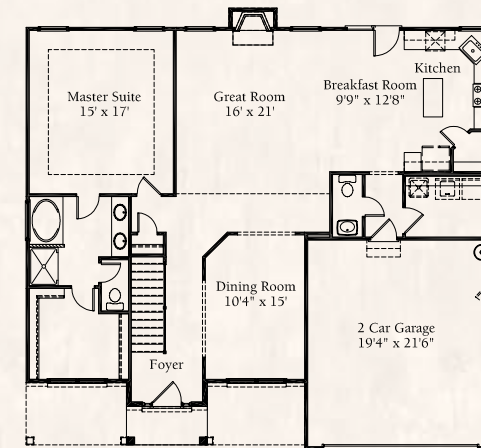
Elevation 3



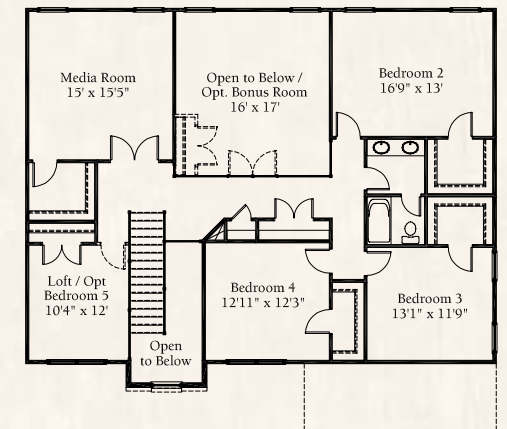
Elevation 4



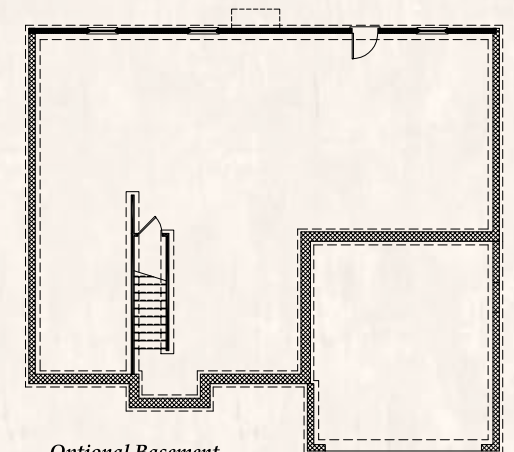
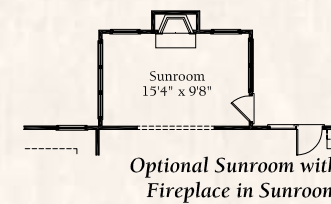
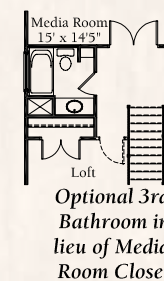
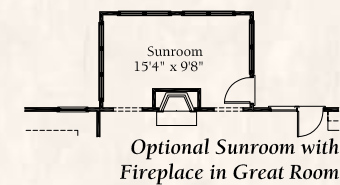
Elevation 5



First Floor Plan



Second Floor Plan

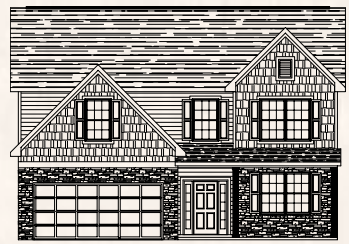


*Beam & wall layout is subject to builder design.

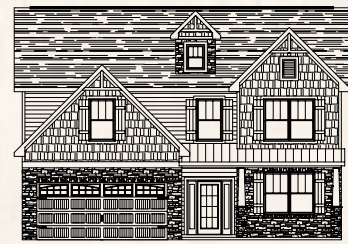


Room Sizes and square footage are approximate. Because we are constantly improving our homes, we reserve the right to revise, change and/or substitute features, dimensions, architectural details and designs without notice. Any illustrations are for discussion purposes only and are not part of the legal contract. Pricing is subject to change without notice.

Canterbury



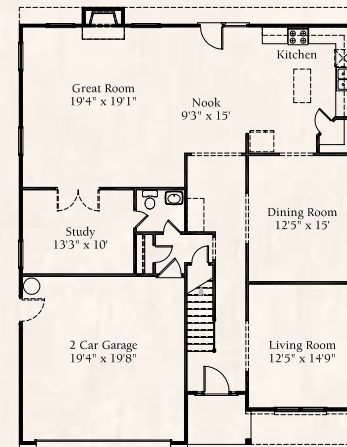
Elevation 4



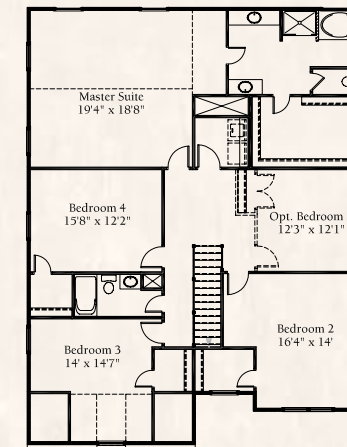
Elevation 5

Canterbury

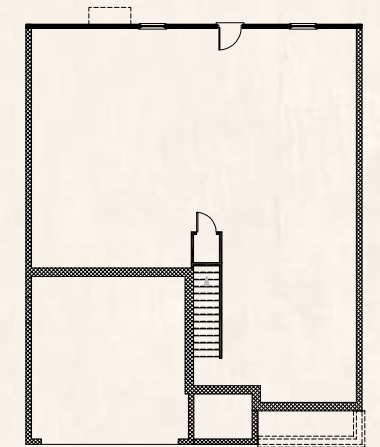
APPROXIMATELY 3438 SF



First Floor Plan

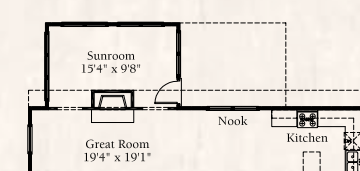


Second Floor Plan

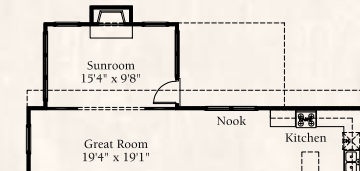


Optional Basement
(Lot dependent)

*Beam & wall layout is subject to builder design.



Optional Sunroom with
Fireplace in Great Room



Optional Sunroom with
Fireplace in Sunroom



Room Sizes and square footage are approximate. Because we are constantly improving our homes, we reserve the right to revise, change and/or substitute features, dimensions, architectural details and designs without notice. Any illustrations are for discussion purposes only and are not part of the legal contract. Pricing is subject to change without notice.

Huntington

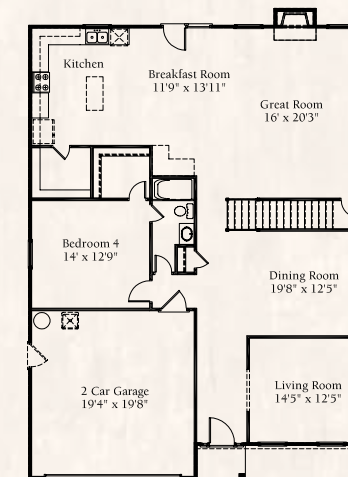


Huntington

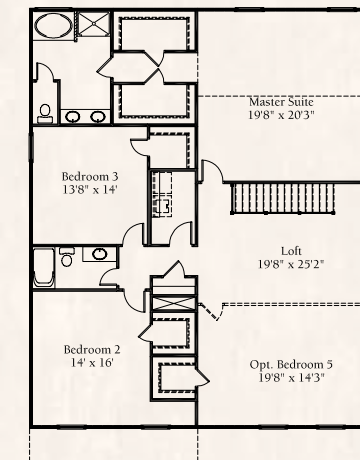
APPROXIMATELY 3685 SF



Elevation 5



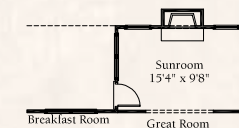
First Floor Plan



Second Floor Plan



Optional Sunroom with
Fireplace in Great Room



Optional Sunroom with
Fireplace in Sunroom



Room Sizes and square footage are approximate. Because we are constantly improving our homes, we reserve the right to revise, change and/or substitute features, dimensions, architectural details and designs without notice. Any illustrations are for discussion purposes only and are not part of the legal contract. Pricing is subject to change without notice.

Oxford



Oxford

APPROXIMATELY 4142 SF



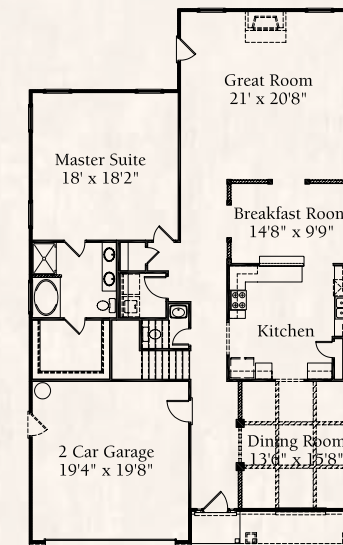
Elevation 2



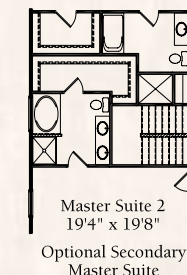
Elevation 4



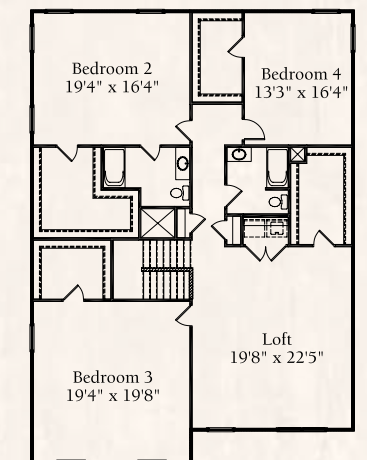
Elevation 5



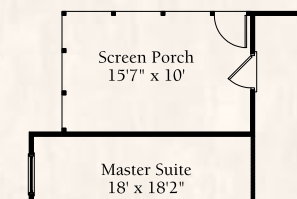
First Floor Plan



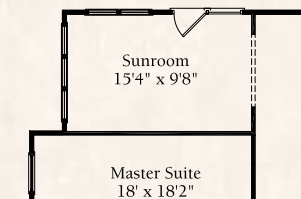
Master Suite 2
19'4" x 19'8"
Optional Secondary Master Suite



Second Floor Plan



Optional Screen Porch



Optional Sunroom



Room Sizes and square footage are approximate. Because we are constantly improving our homes, we reserve the right to revise, change and/or substitute features, dimensions, architectural details and designs without notice. Any illustrations are for discussion purposes only and are not part of the legal contract. Pricing is subject to change without notice.



WINDSORAUGHTRY.COM



P.O. Box 16449 | Greenville, SC 29606 | p 864-271-9855 | f 864-370-0042

