

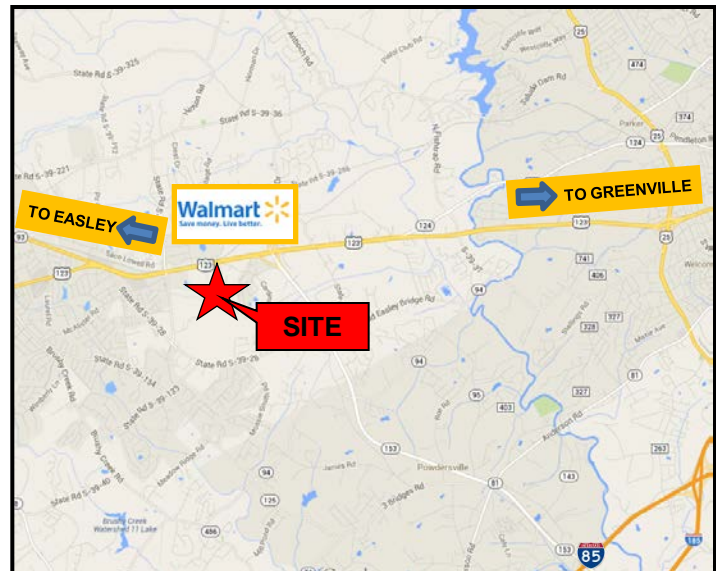
18+/- ACRES / HWY. 123

Easley, SC



18+/- Acres / Hwy. 123 Easley, SC

Size: 18+/- acres
Zoning: Commercial / Pickens County
Utilities: Water, sewer, electric, gas
Traffic Count: 33,500 vpd – Hwy. 123
Price: \$175,000/acre



FOR INFORMATION CONTACT:

Andy Parnell or Bill Fayssoux

864-679-3638 or 864-679-3632

aparnell@windsoraughtry.com

bfayssoux@windsoraughtry.com

www.windsoraughtry.com



864-271-9855 / PO BOX 16449 / GREENVILLE, SC 29606-7449

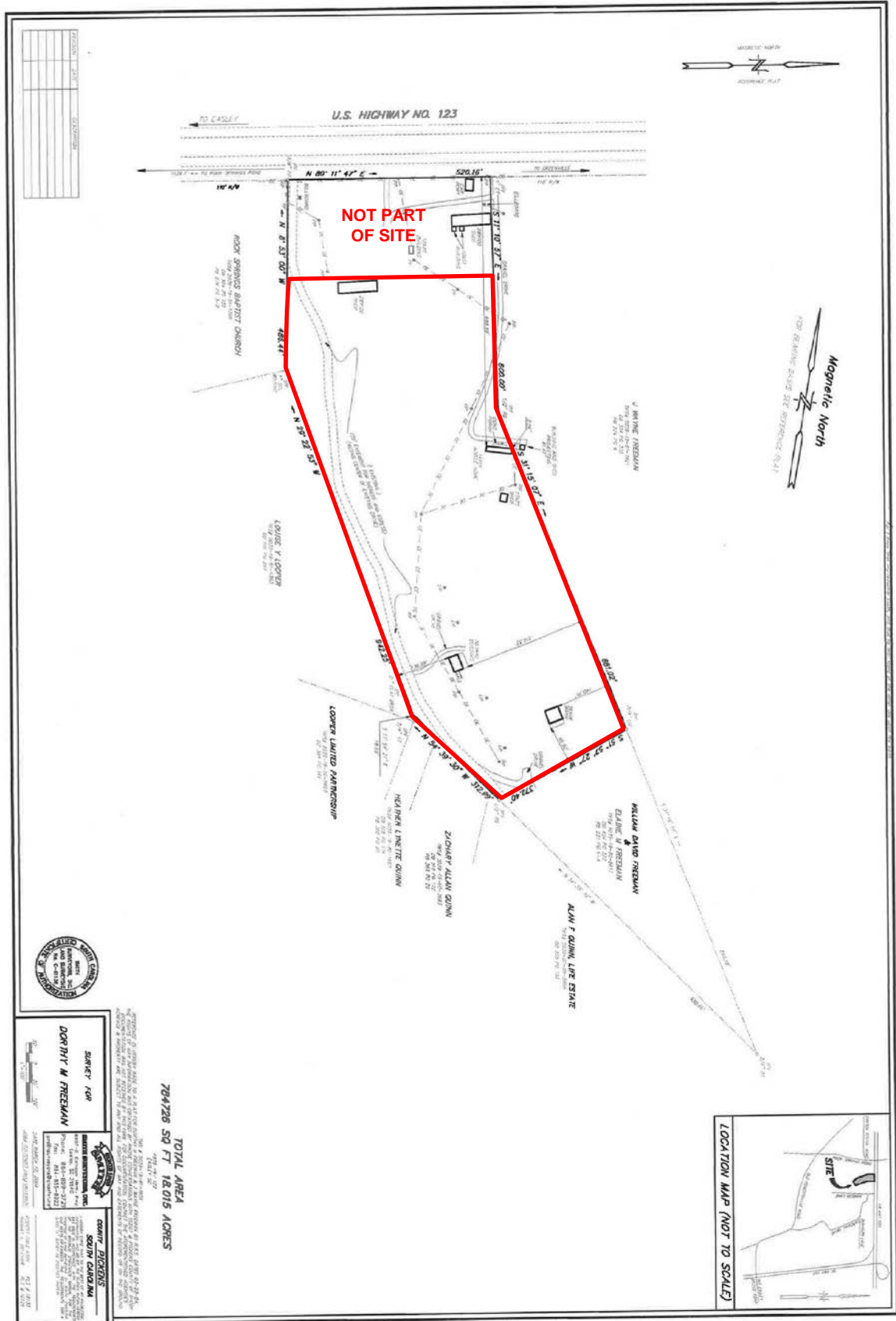
No warranty is made as to the accuracy of this information, and same is submitted subject to errors, omissions, price change, rental or other conditions, withdrawal without notice, and any special listing conditions imposed by our principals. Charles S. Reyner, Jr., CCIM – Broker In Charge

FOR SALE

18+/- ACRES / HWY. 123

Easley, SC

FOR SALE



864-271-9855 / PO BOX 16449 / GREENVILLE, SC 29606-7449

No warranty is made as to the accuracy of this information, and same is submitted subject to errors, omissions, price change, rental or other conditions, withdrawal without notice, and any special listing conditions imposed by our principals. Charles S. Reyner, Jr., CCIM – Broker In Charge

