

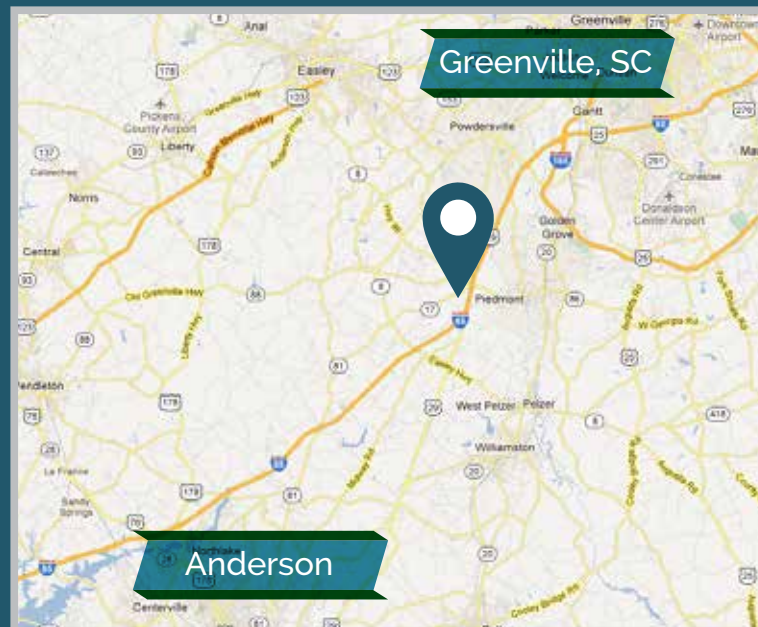
# RETAIL SITE FOR SALE

I-85 and Hwy. 86 (Exit 35), Anderson County



## PROPERTY DETAIL

- Interstate frontage/visibility
- Direct access from Hwy. 86  
(Interstate controlled access ends at common property line)
- Traffic signal
- Access from Hwy. 17
- Traffic Counts:  
Hwy. 86 – 13,000 vpd  
I-85 – 80,000 vpd
- Price - \$850,000



## Contact

Michael Spiers



864-679-3634



mspiers@windsoraghty.com

**WA** WINDSOR  
AUGHTRY

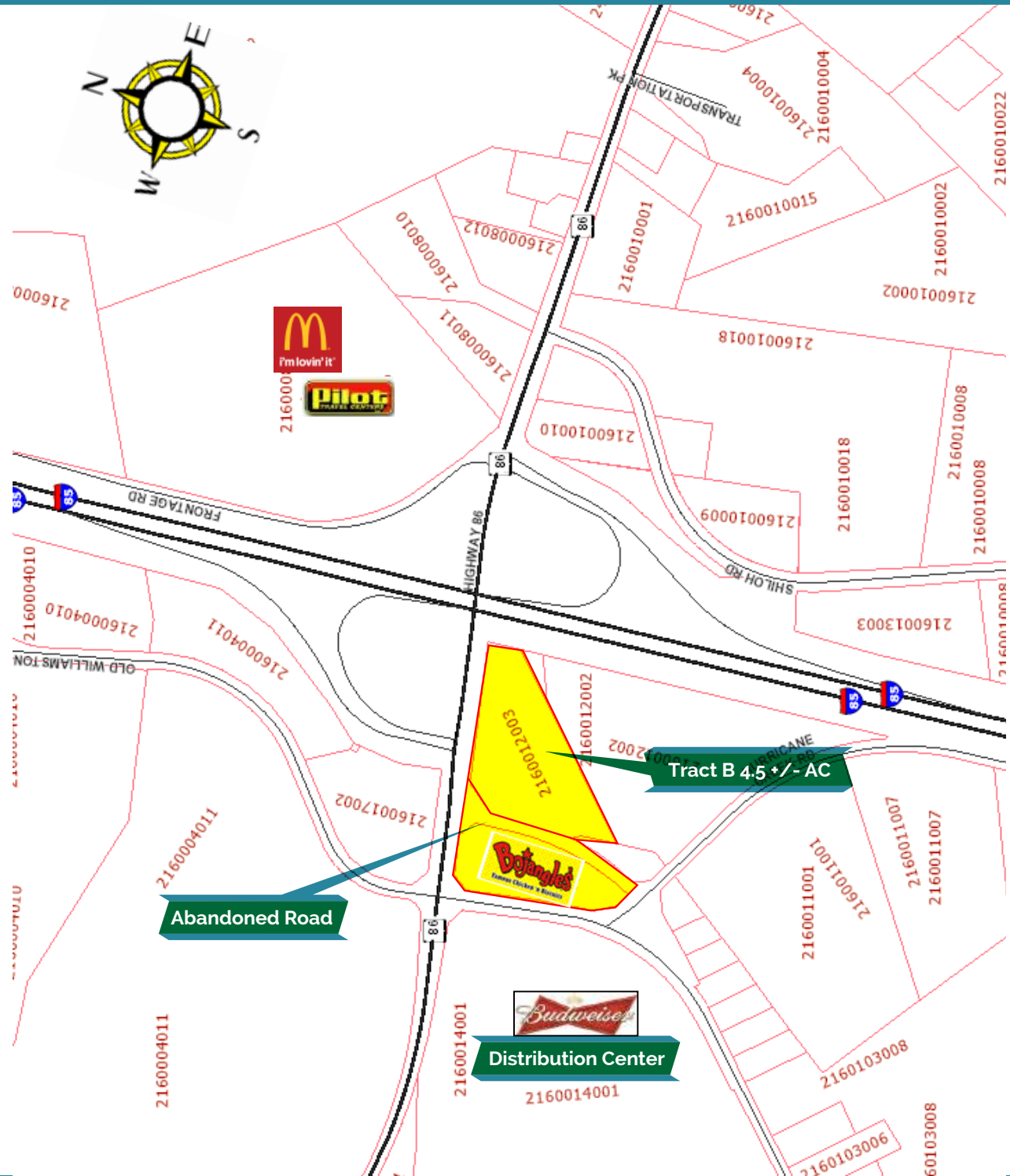
864-271-9855

www.windsoraghty.com

No warranty is made as to the accuracy of this information, and same is submitted subject to errors, omissions, price change, rental or other conditions, withdrawal without notice, and any special listing conditions imposed by our principals. William J. Alexander, IV – Broker In Charge

# RETAIL SITE FOR SALE

I-85 and Hwy. 86 (Exit 35), Anderson County



## Contact

Michael Spiers



864-679-3634



[mspiers@windsoraghttry.com](mailto:mspiers@windsoraghttry.com)

**WA WINDSOR  
AUGHTRY**



864-271-9855



[www.windsoraghttry.com](http://www.windsoraghttry.com)

No warranty is made as to the accuracy of this information, and same is submitted subject to errors, omissions, price change, rental or other conditions, withdrawal without notice, and any special listing conditions imposed by our principals. William J. Alexander, IV – Broker In Charge