



MEDICAL OFFICE SPACE FOR SALE



30-31 Memorial Medical Drive, Greenville, SC 29605

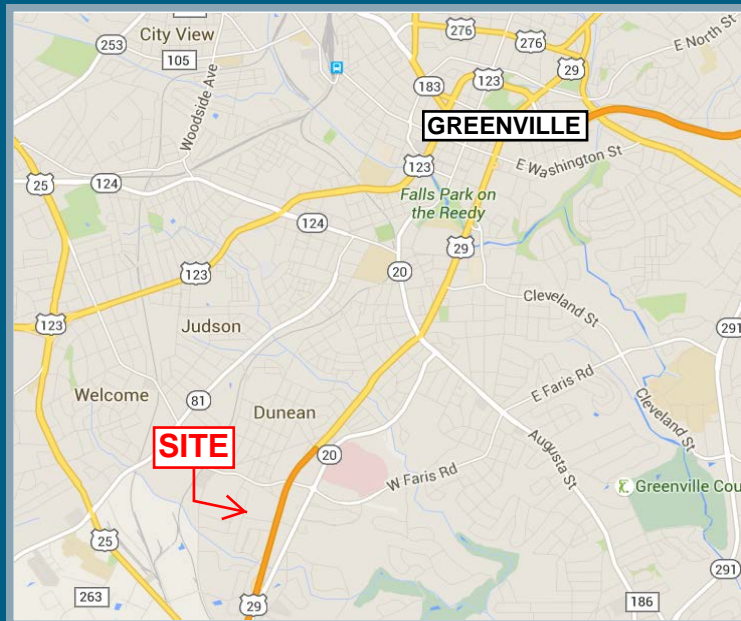


DEAL OF THE DECADE
\$48 / SF

PROPERTY DETAILS

- » 8,400 +/- SF Medical Office Building
- » 0.48 +/- acres
- » Zoned C-2;
Commercial Greenville County
- » Price - ~~\$546,000~~

Reduced Price - \$400,000



Contact

Laurens Nicholson, CCIM, SIOR

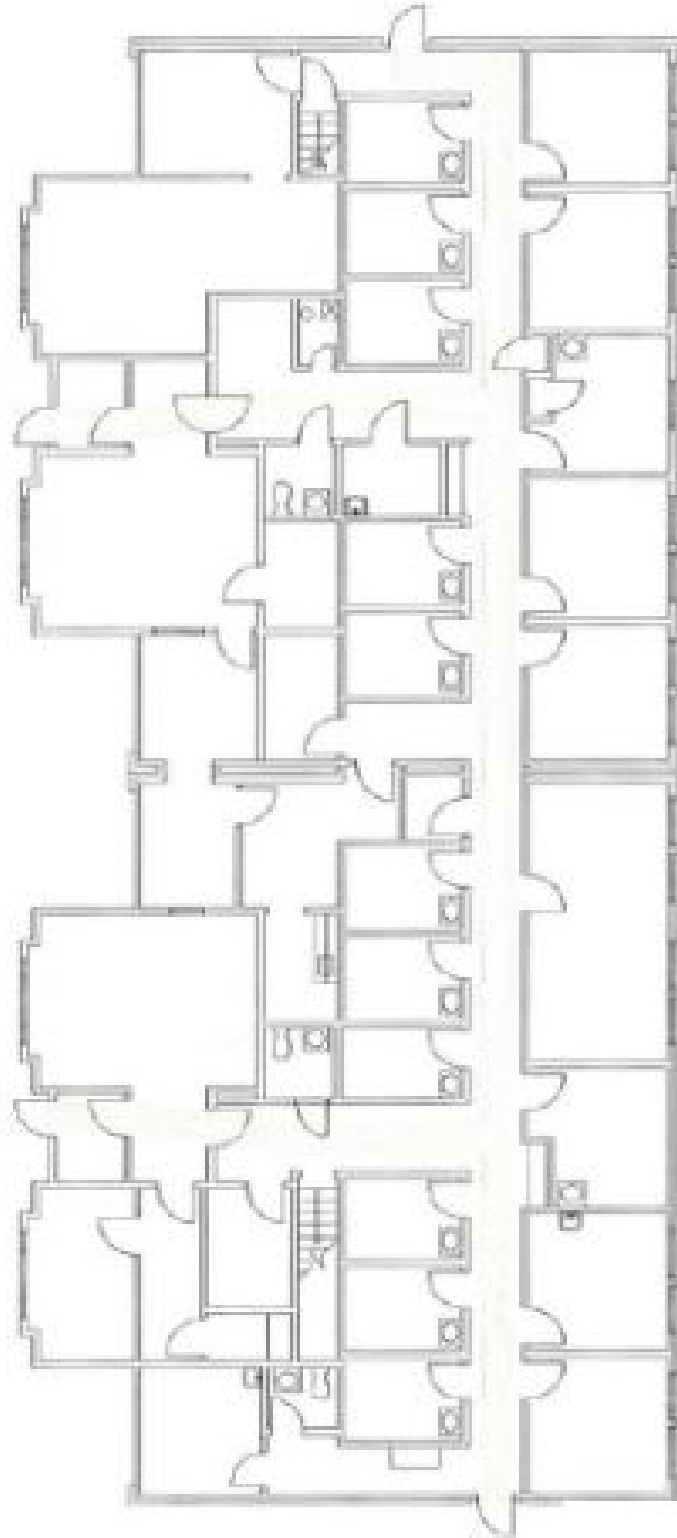
📞 864.679.3639 ✉️ lnicholson@windsoraughtry.com



COMMERCIAL GROUP

📞 864.271.9855 🌐 www.windsoraughtry.com

No warranty is made as to the accuracy of this information, and same is submitted subject to errors, omissions, price change, rental or other conditions, withdrawal without notice, and any special listing conditions imposed by our principals. William J. Alexander, IV – Broker In Charge





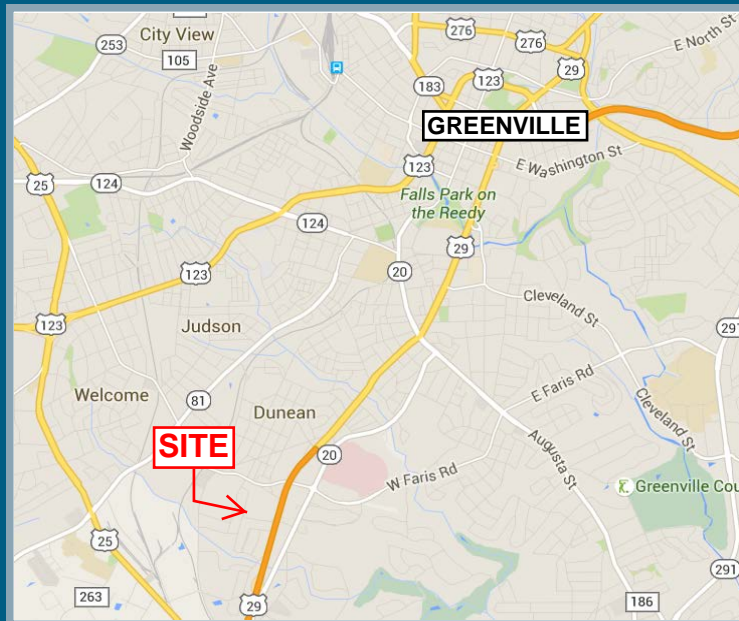
MEDICAL OFFICE SPACE FOR LEASE

30-31 Memorial Medical Drive, Greenville, SC 29605



PROPERTY DETAILS

- » 8,400 +/- SF Medical Office Building
- » 0.48 +/- acres
- » Zoned C-2;
Commercial Greenville County
- » Lease Rate - \$8.00/SF NNN



Contact

Laurens Nicholson, CCIM, SIOR

📞 864.679.3639 ✉️ lnicholson@windsoraughtry.com



COMMERCIAL GROUP

📞 864.271.9855 🌐 www.windsoraughtry.com

No warranty is made as to the accuracy of this information, and same is submitted subject to errors, omissions, price change, rental or other conditions, withdrawal without notice, and any special listing conditions imposed by our principals. William J. Alexander, IV – Broker In Charge

