

For Sale – Grey Road Tract

254 GREY ROAD
PELZER, SC, 29669

WA WINDSOR
AUGHTRY
COMMERCIAL GROUP



Asking Price
\$1,790,000

Property Features

- +/- 104 Acres
- Tax Map Numbers: 0588010103000
0588010102700
0588010102800
- Great topography for development
- Excellent deer and turkey hunting
- Small pond
- 30 minutes to downtown Greenville
- Asking price: \$17,250/Acre / \$1,790,000



C. Gray Morgan, CCIM

Principal | Chief Financial Officer
gmorgan@windsoraughtry.com
864.679.3636

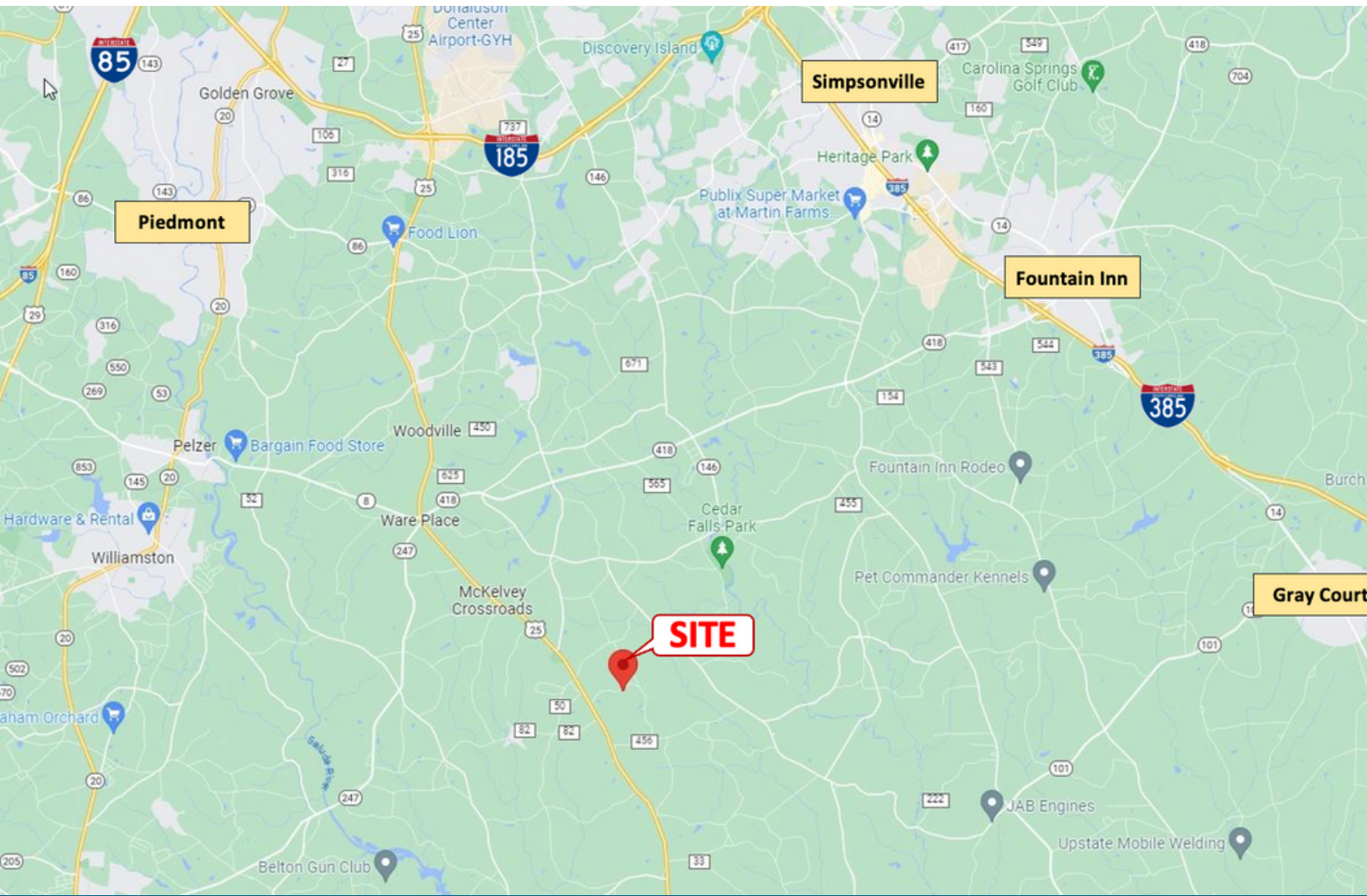


No warranty is made as to the accuracy of this information, and same is submitted subject to errors, omissions, price change, rental or other conditions, withdrawal without notice, and any special listing conditions imposed by our principals.
William J. Alexander, IV – Broker In Charge



Grey Road Tract

254 GREY ROAD
PELZER, SC, 29669



Property Overview

The property has two cabins; a 650 SF cabin with full kitchen and bath built in 2010 located on the Grey Road side of the property and an 800 SF 2 BR/1 BA cabin with full kitchen built in 2018 on the Crawford Road side.

Also included is an 8 stall horse stable and a 3,600 SF (60 x 60) shop building with 16 ft roll-up doors, plus a 20x20 metal storage building. Deer and turkey are abundant on the property. Nice rolling topography and close access to public water make this an ideal large lot development opportunity.

Location Overview

- 30 minutes to downtown
- 15 minutes to Southern Connector
- 20 minutes to I-85
- Frontage on Grey Road
- Access from Crawford Dr.

Property Features

- 3,600 SF shop
- 20x20 storage building
- Two cabins - both with full kitchen and bath
- Rolling topography
- Close access to public water
- 8 stall horse stable

C. Gray Morgan, CCIM
Principal | Chief Financial Officer
gmorgan@windsoraghttry.com
864.679.3636



No warranty is made as to the accuracy of this information, and same is submitted subject to errors, omissions, price change, rental or other conditions, withdrawal without notice, and any special listing conditions imposed by our principals.
William J. Alexander, IV - Broker In Charge

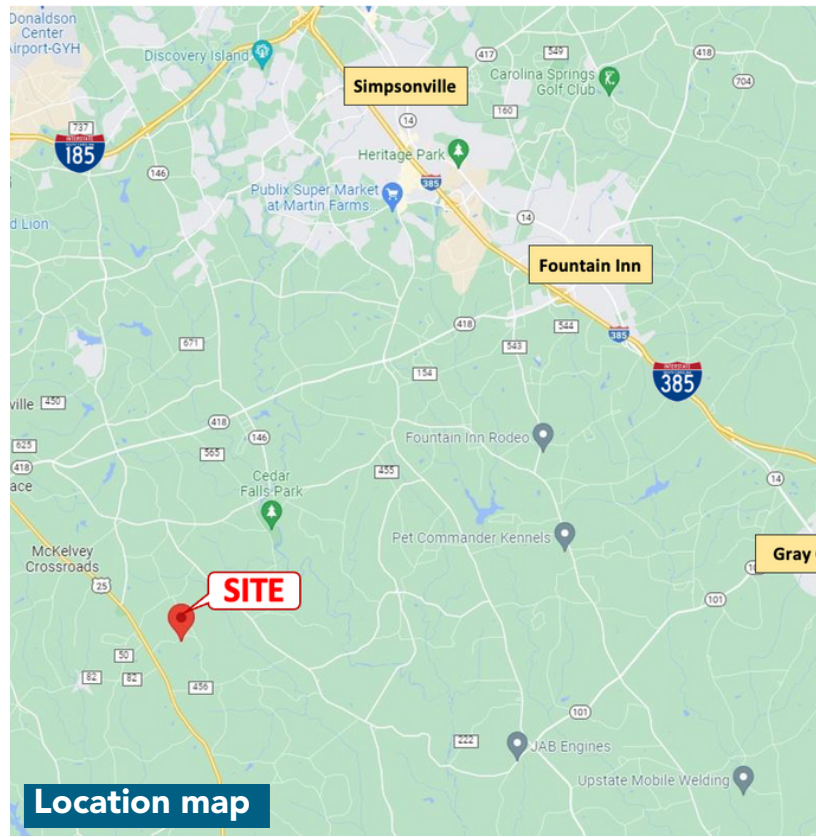


Grey Road Tract

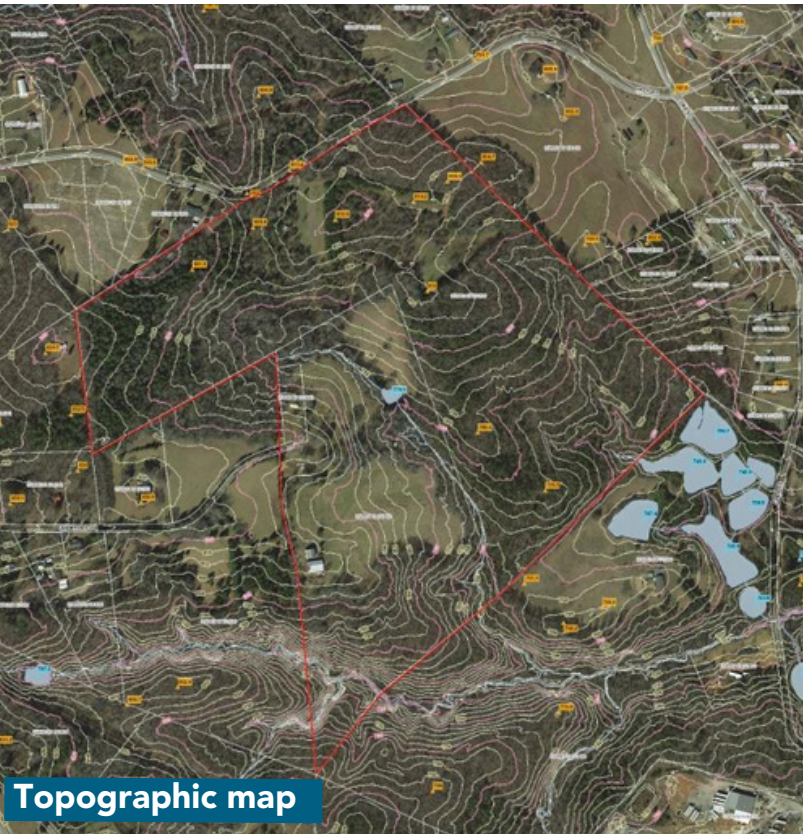
254 GREY ROAD
PELZER, SC, 29669



Zoning map



Location map



Topographic map



Tax map

C. Gray Morgan, CCIM
Principal | Chief Financial Officer
gmorgan@windsorhughtry.com
864.679.3636



No warranty is made as to the accuracy of this information, and same is submitted subject to errors, omissions, price change, rental or other conditions, withdrawal without notice, and any special listing conditions imposed by our principals.
William J. Alexander, IV - Broker In Charge



Grey Road Tract

254 GREY ROAD
PELZER, SC, 29669

Cabins



C. Gray Morgan, CCIM
Principal | Chief Financial Officer
gmorgan@windsoraghttry.com
864.679.3636



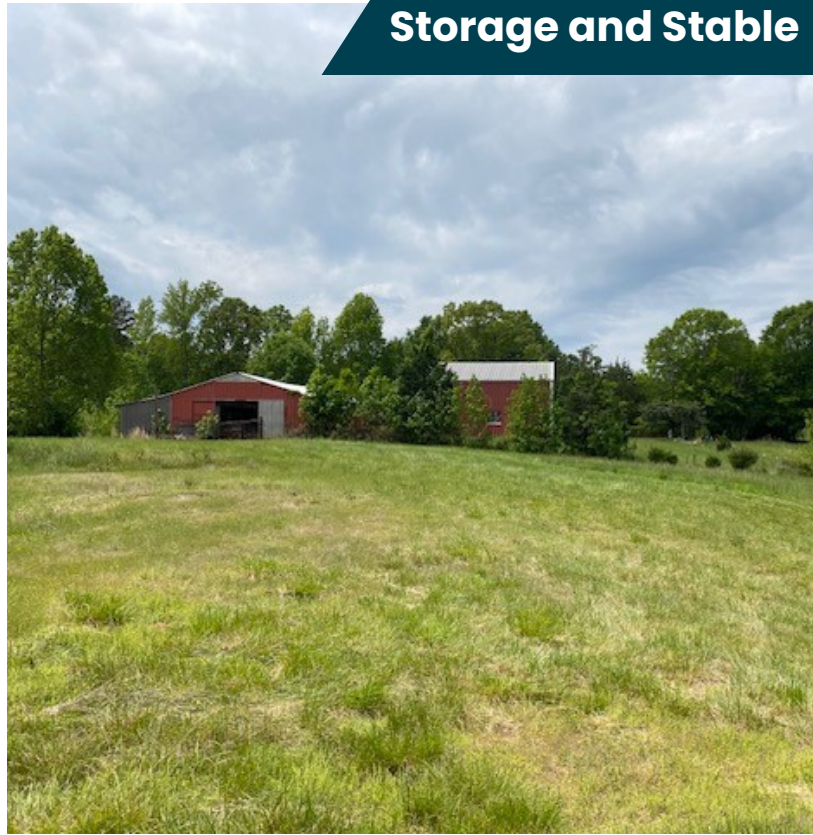
No warranty is made as to the accuracy of this information, and same is submitted subject to errors, omissions, price change, rental or other conditions, withdrawal without notice, and any special listing conditions imposed by our principals.
William J. Alexander, IV - Broker In Charge



Grey Road Tract

254 GREY ROAD
PELZER, SC, 29669

Storage and Stable



C. Gray Morgan, CCIM
Principal | Chief Financial Officer
gmorgan@windsoraghttry.com
864.679.3636



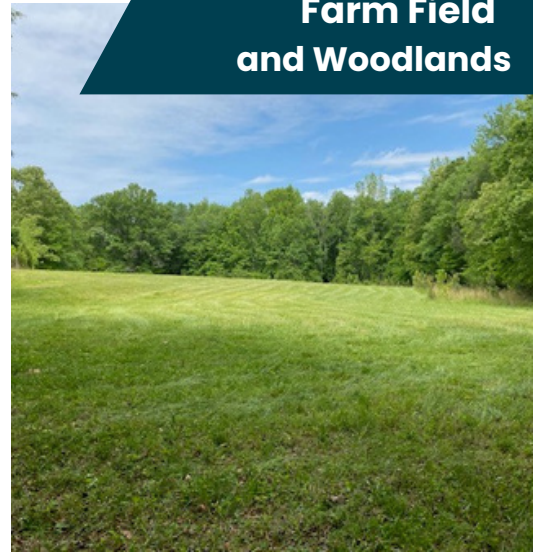
No warranty is made as to the accuracy of this information, and same is submitted subject to errors, omissions, price change, rental or other conditions, withdrawal without notice, and any special listing conditions imposed by our principals.
William J. Alexander, IV - Broker In Charge



Grey Road Tract

254 GREY ROAD
PELZER, SC, 29669

Farm Field and Woodlands



C. Gray Morgan, CCIM
Principal | Chief Financial Officer
gmorgan@windsoraghttry.com
864.679.3636



No warranty is made as to the accuracy of this information, and same is submitted subject to errors, omissions, price change, rental or other conditions, withdrawal without notice, and any special listing conditions imposed by our principals.
William J. Alexander, IV - Broker In Charge



Grey Road Tract

254 GREY ROAD
PELZER, SC, 29669

Food Plot and Pond



C. Gray Morgan, CCIM
Principal | Chief Financial Officer
gmorgan@windsoraghttry.com
864.679.3636



No warranty is made as to the accuracy of this information, and same is submitted subject to errors, omissions, price change, rental or other conditions, withdrawal without notice, and any special listing conditions imposed by our principals.
William J. Alexander, IV - Broker In Charge



Grey Road Tract

254 GREY ROAD
PELZER, SC, 29669

Deer Stands



C. Gray Morgan, CCIM
Principal | Chief Financial Officer
gmorgan@windsoraghttry.com
864.679.3636

**WA WINDSOR
AUGHTRY**
COMMERCIAL GROUP

No warranty is made as to the accuracy of this information, and same is submitted subject to errors, omissions, price change, rental or other conditions, withdrawal without notice, and any special listing conditions imposed by our principals.
William J. Alexander, IV - Broker In Charge



Grey Road Tract

254 GREY ROAD
PELZER, SC, 29669

Deer and Turkey Sightings



C. Gray Morgan, CCIM
Principal | Chief Financial Officer
gmorgan@windsoraghttry.com
864.679.3636

**WA WINDSOR
AUGHTRY**
COMMERCIAL GROUP

No warranty is made as to the accuracy of this information, and same is submitted subject to errors, omissions, price change, rental or other conditions, withdrawal without notice, and any special listing conditions imposed by our principals.
William J. Alexander, IV - Broker In Charge