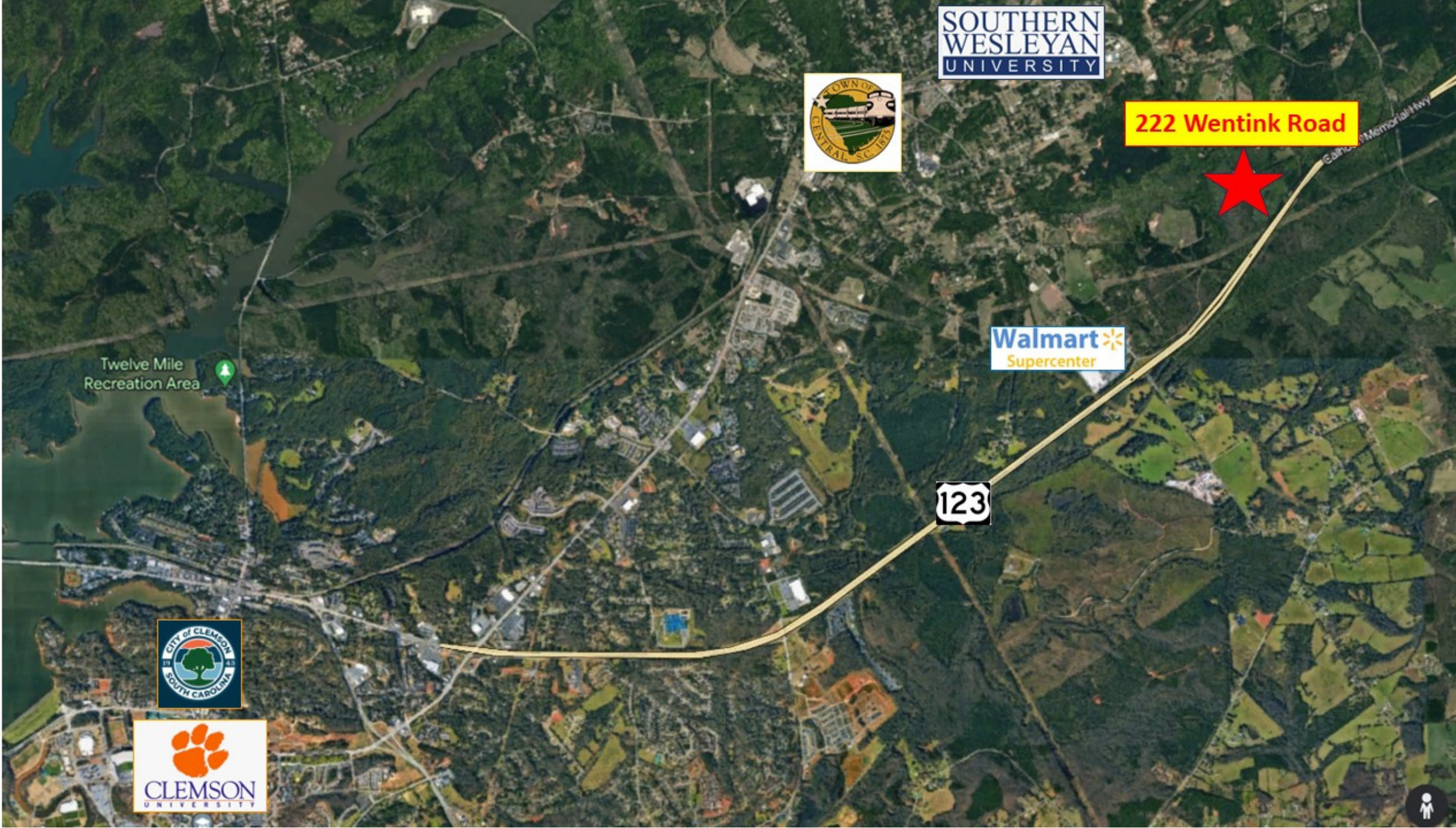


87 ACRES FOR SALE

222 Wentink Road, Central, SC 29630

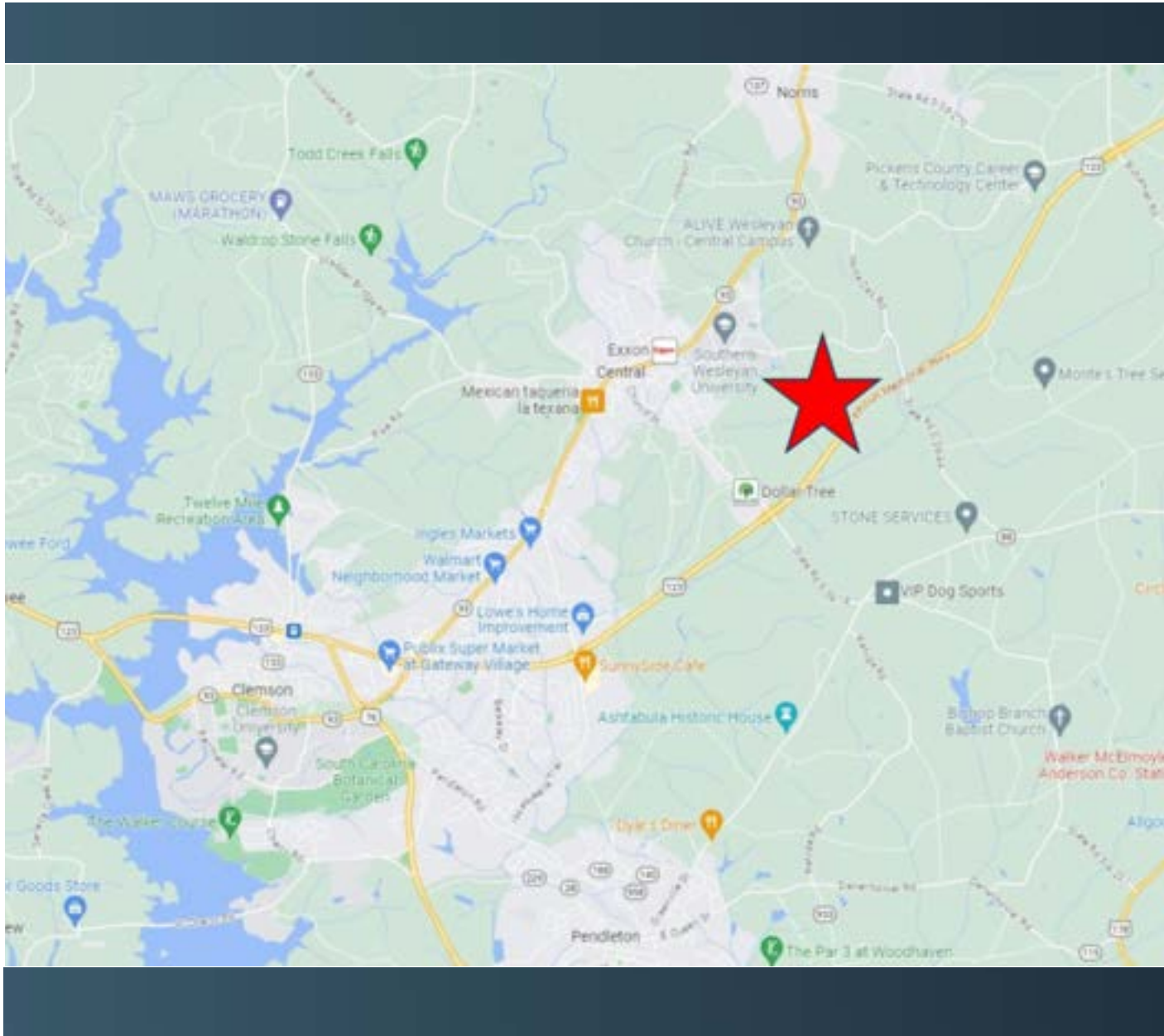


Laurens Nicholson, CCIM, SIOR

Principal | Broker
D: 864.271.9855 | C: 864.270.2706
lnicholson@windsoraughtry.com

Matt Brashier

Principal | Broker | Developer
D: 864.271.9855 | C: 864-906-0363
mbrashier@windsoraughtry.com



PROPERTY SIZE:	87 Acres
ADDRESS:	222 Wentink Road
CITY:	Central
STATE:	South Carolina
COUNTY:	Pickens
ZONING:	R12
UTILITIES:	Water, Electric, Sewer
PARCEL NUMBER:	4075-00-43-6049

PRICING: \$60,000/AC

- PROPERTY HIGHLIGHTS:**
- Easy access to Highway 123
 - Close proximity to the town of Clemson, Clemson University, Easley and Anderson
 - Close proximity to Lake Hartwell and Lake Keowee
 - Retail, Dining and Medical all close by in Central, Clemson and Easley
 - Brand new sewer on property

- DRIVE TIMES:**
- Clemson, SC - 7 minutes
 - Easley, SC - 15 minutes
 - Anderson, SC - 20 minutes
 - Greenville, SC - 30 minutes
 - Lake Keowee - 15 minutes
 - Lake Hartwell - 20 minutes
 - I - 85 - 20 minutes

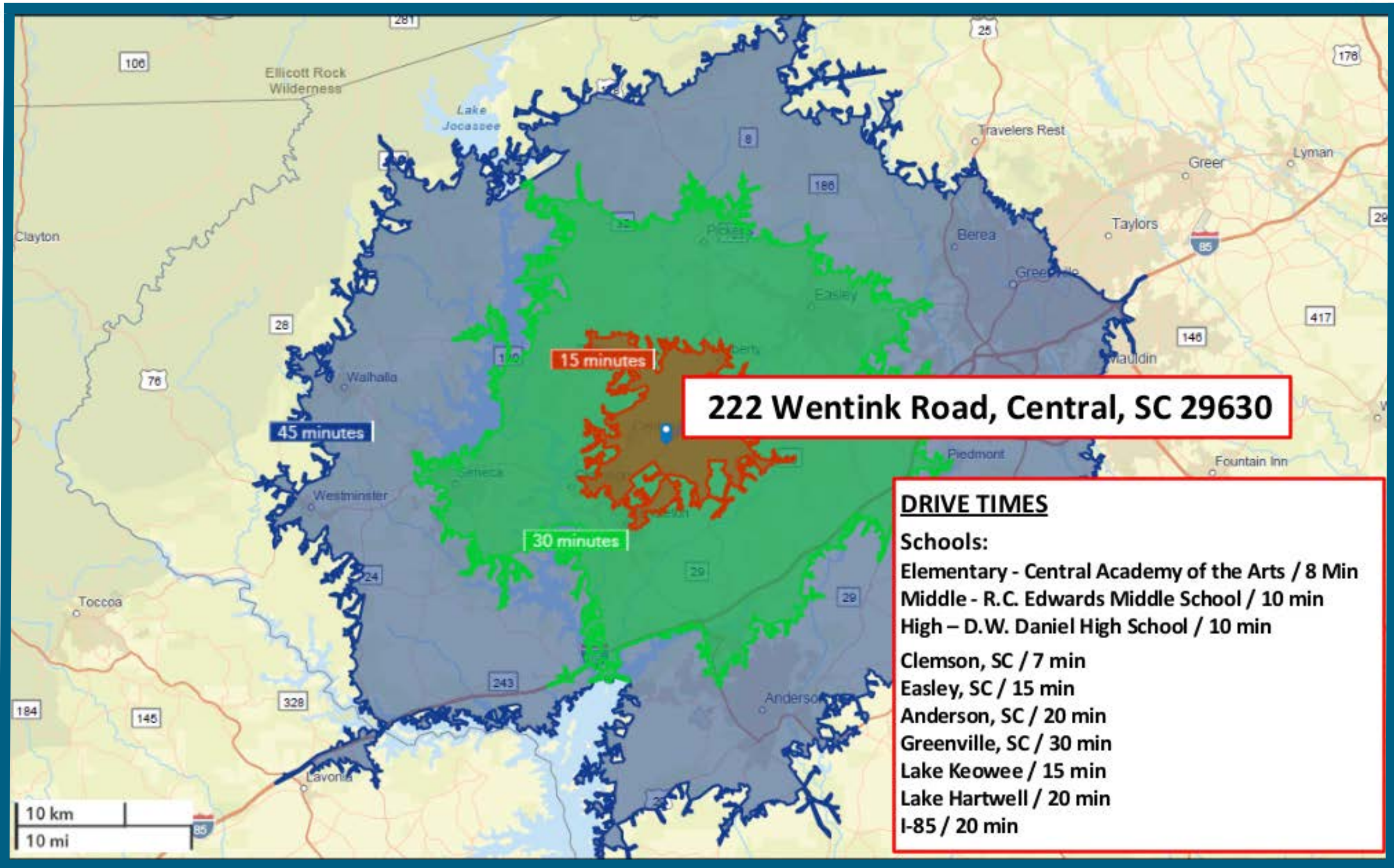
- SCHOOL DRIVE TIMES:**
- Elementary - Central Academy of the Arts (8 min)
 - Middle - R.C. Edwards Middle School (10 min)
 - High - D.W. Daniel High School (10 min)

OFFERING MEMORANDUM

87 ACRES FOR SALE
 222 Wentink Road, Central, SC 29630

Property Details





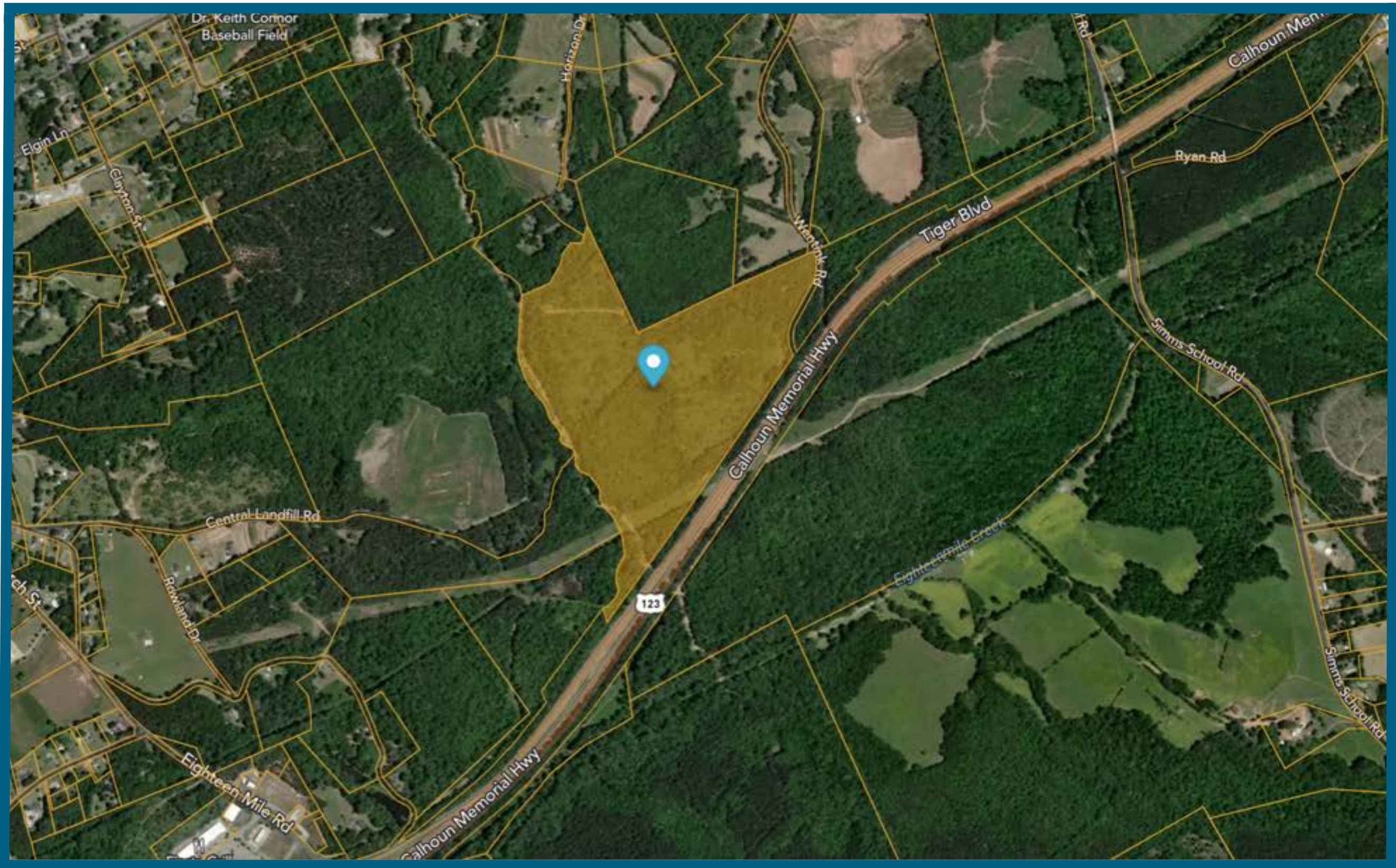
OFFERING MEMORANDUM

87 ACRES FOR SALE

222 Wentink Road, Central, SC 29630

Drive Times





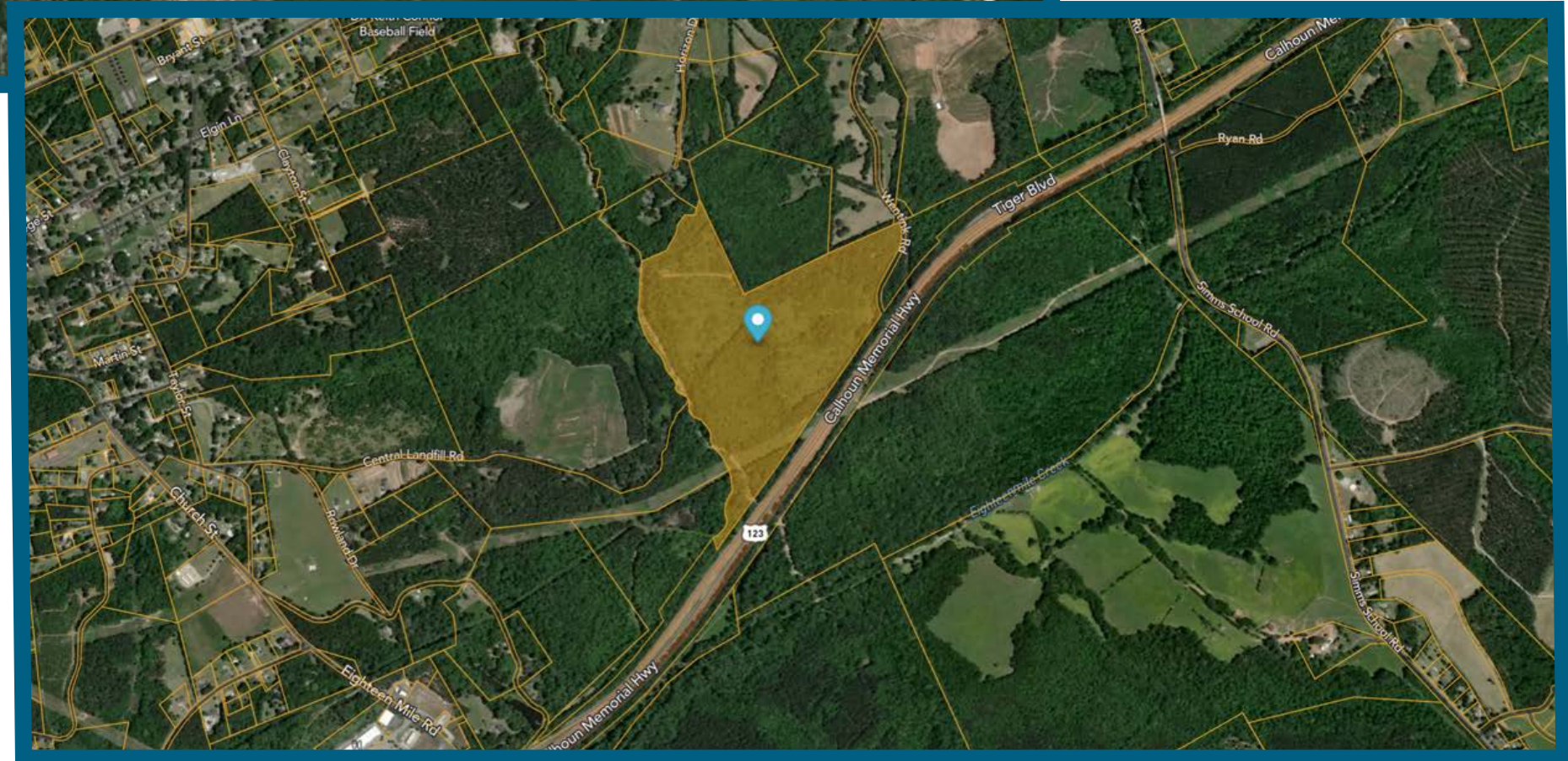
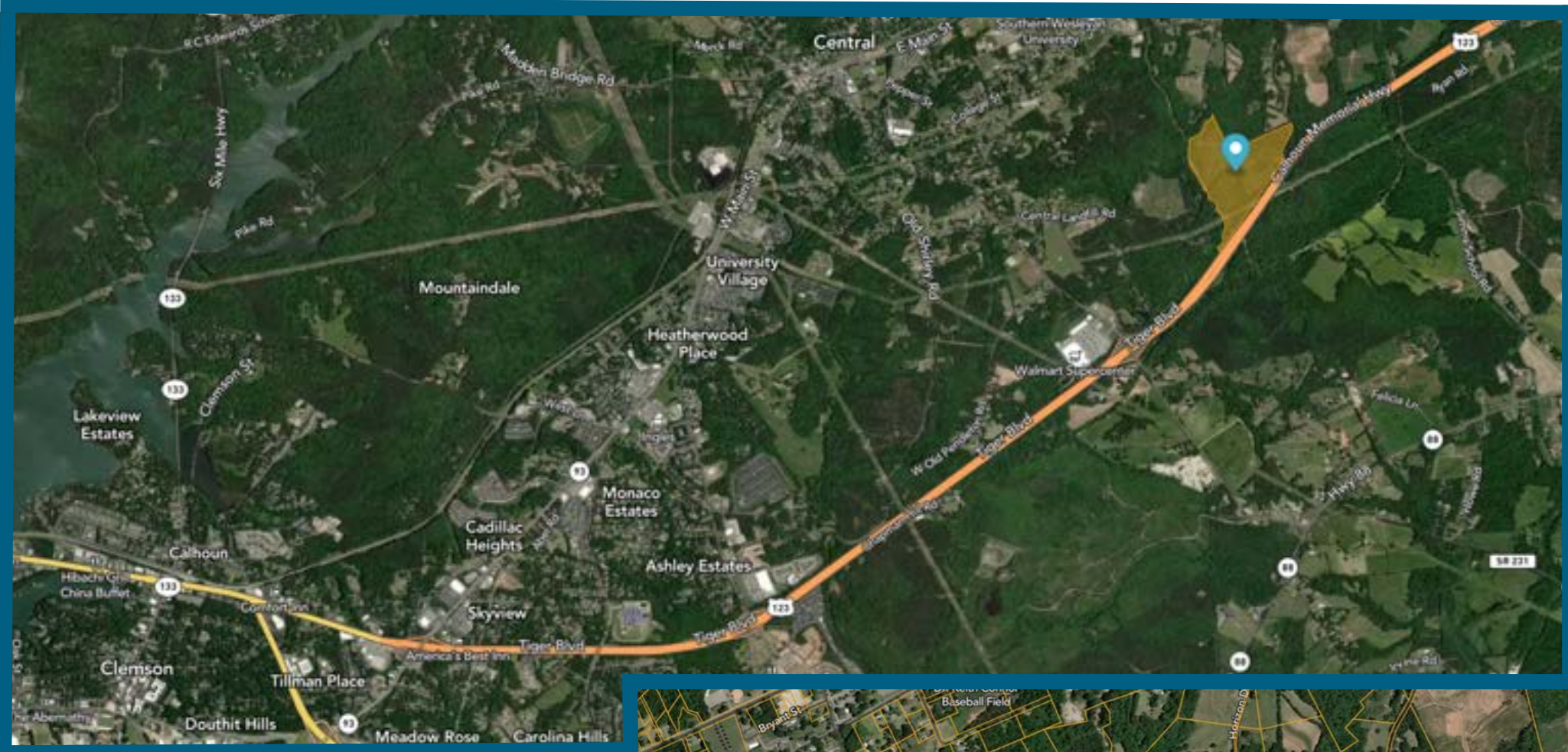
OFFERING MEMORANDUM

87 ACRES FOR SALE

222 Wentink Road, Central, SC 29630

Aerial Map





OFFERING MEMORANDUM

87 ACRES FOR SALE

222 Wentink Road, Central, SC 29630

Aerial Map

