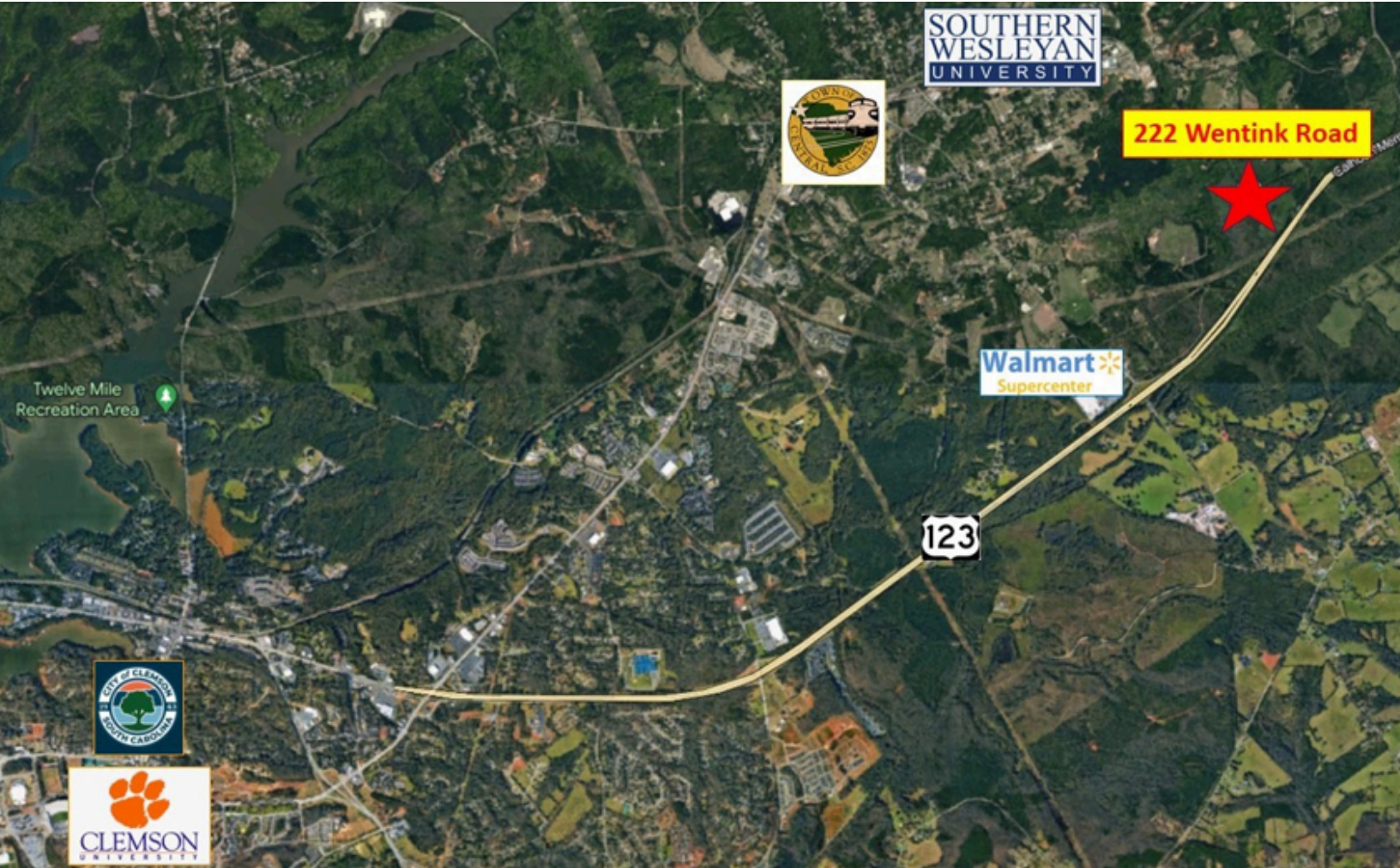


222 WENTINK ROAD  
CENTRAL, SC 29630

# 87 ACRES



## PROPERTY FEATURES

COUNTY:	Pickens
Zoning:	R12
Utilities:	Water, Electric, Sewer
PARCEL #:	4075-00-43-6049
SIZE:	87 Acres
PRICE:	\$60,000/AC

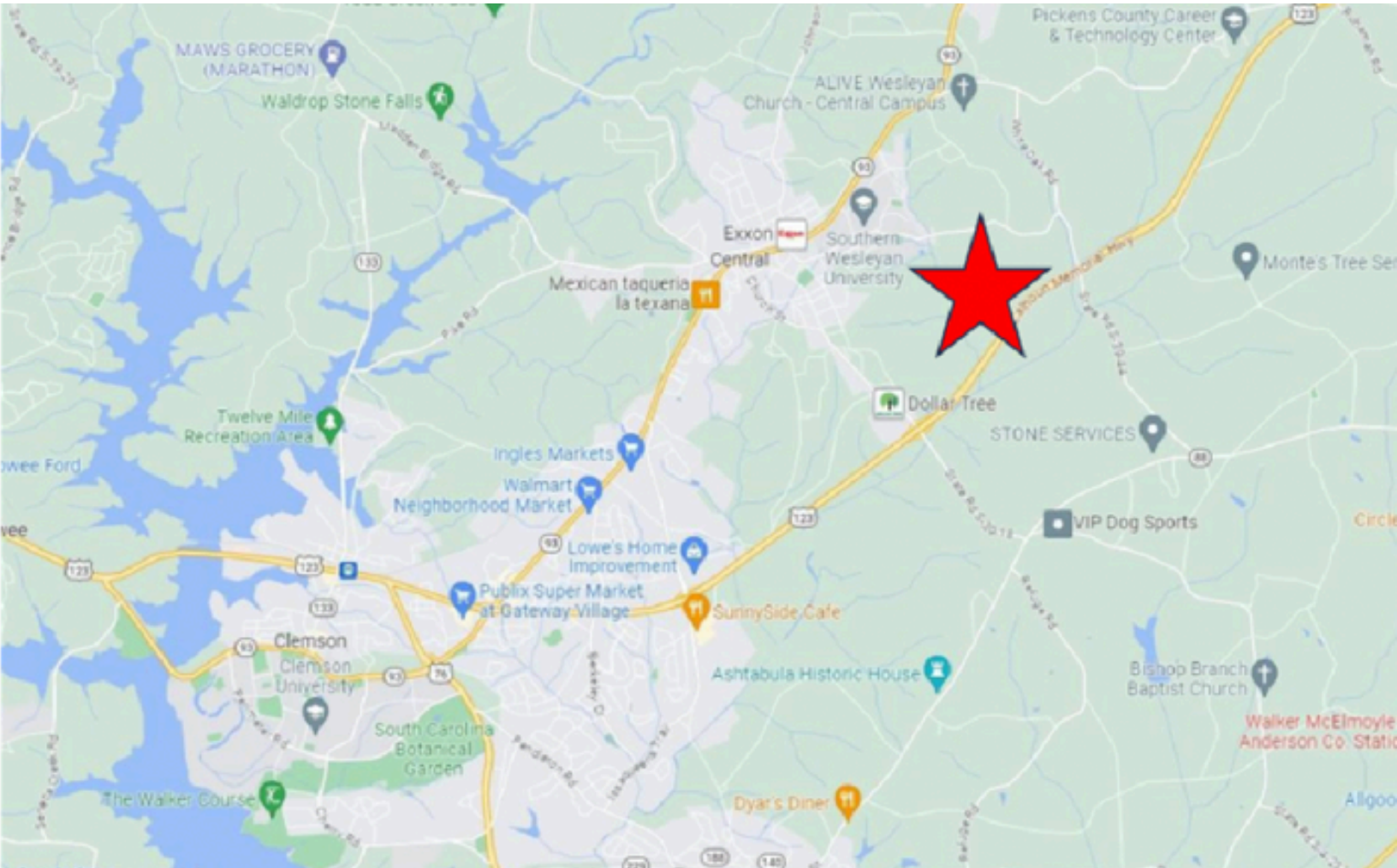
Laurens Nicholson, CCIM, SIOR

D: 864-679-3637 | C: 864-270-2706

lnicholson@windsoraghty.com

222 WENTINK ROAD  
CENTRAL, SC 29630

# 87 ACRES



## PROPERTY FEATURES

- Easy access to Highway 123
- Close proximity to the town of Clemson, Clemson University, Easley and Anderson
- Close proximity to Lake Hartwell and Lake Keowee
- Retail, Dining and Medical all close by in Central, Clemson and Easley
- Brand new sewer on property

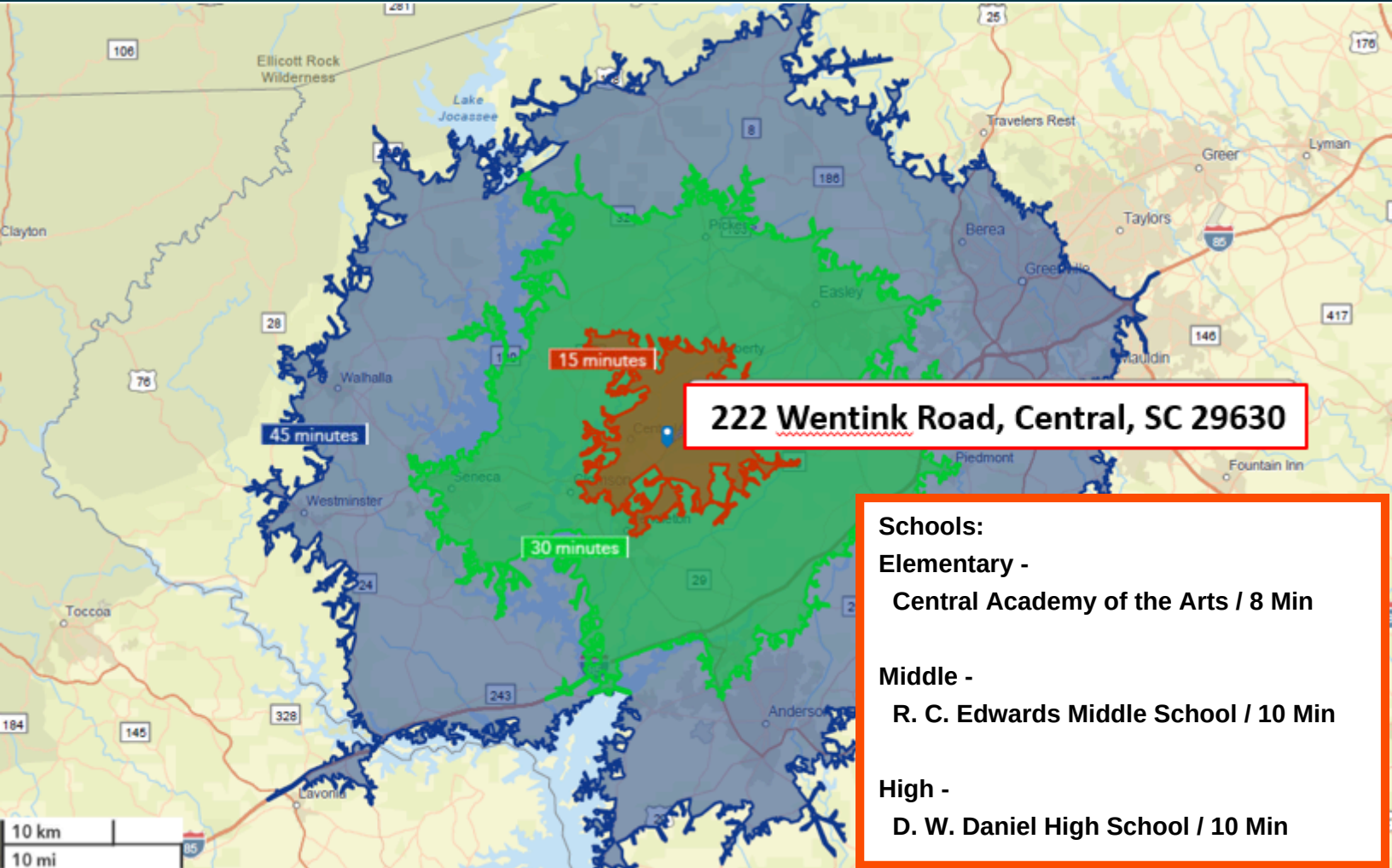
Laurens Nicholson, CCIM, SIOR

D: 864-679-3637 | C: 864-270-2706

lnicholson@windsorauhtry.com

222 WENTINK ROAD  
CENTRAL, SC 29630

**87 ACRES**



**DRIVE  
TIMES**

Clemson, SC:	7 minutes
Easley, SC:	15 minutes
Anderson, SC:	20 minutes
Greenville, SC:	30 minutes
Lake Keowee:	15 minutes
Lake Hartwell:	20 minutes
I - 85:	20 minutes

**Laurens Nicholson, CCIM, SIOR**

D: 864-679-3637 | C: 864-270-2706

lnicholson@windsorauhtry.com

222 WENTINK ROAD  
CENTRAL, SC 29630

# 87 ACRES



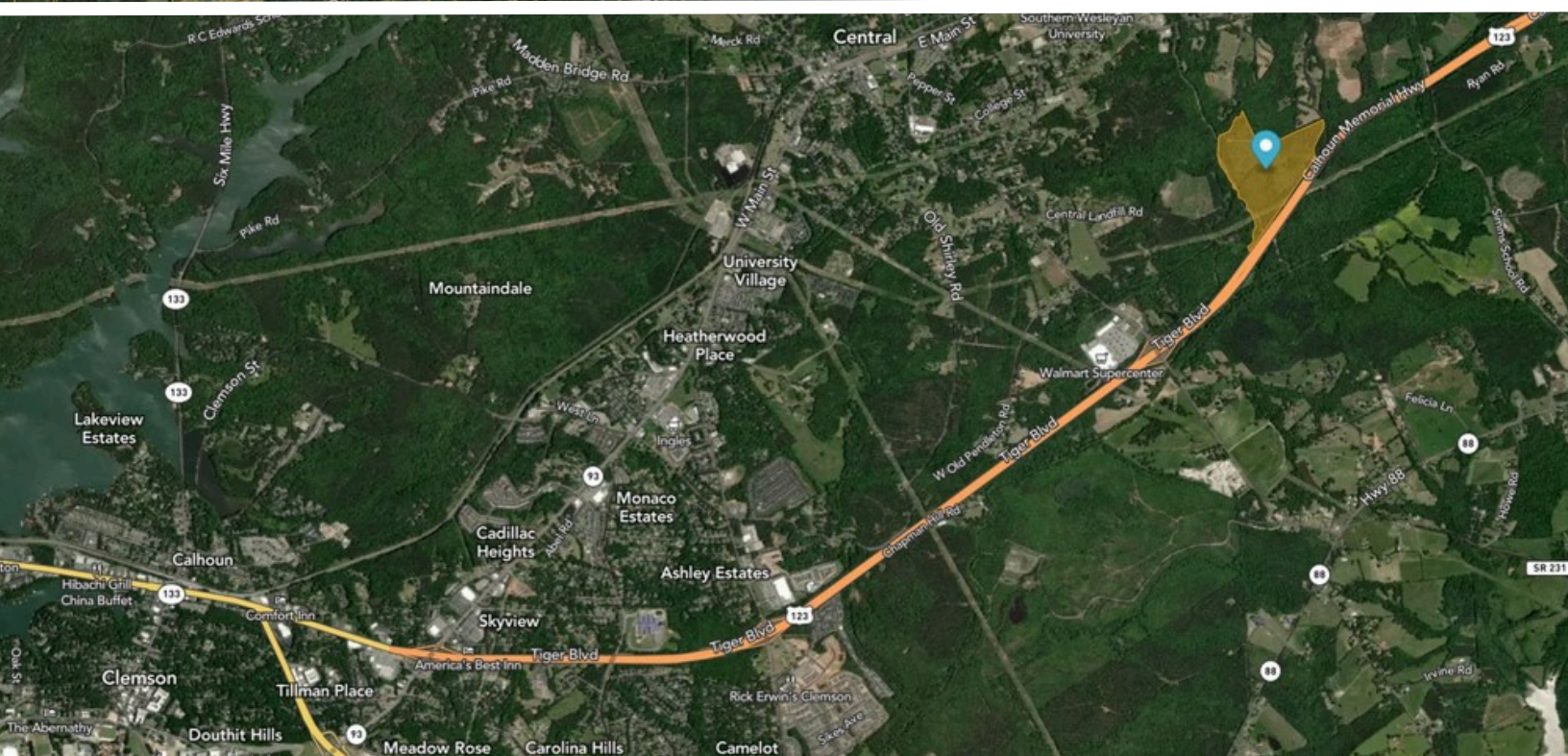
Laurens Nicholson, CCIM, SIOR

D: 864-679-3637 | C: 864-270-2706

lnicholson@windsorauhtry.com

222 WENTINK ROAD  
CENTRAL, SC 29630

# 87 ACRES



Laurens Nicholson, CCIM, SIOR

D: 864-679-3637 | C: 864-270-2706

lnicholson@windsorauhtry.com